

ONDERDELENBOEK

**MITSUBISHI-
MOTOREN**

KE70

KE75

HOW TO USE THIS PARTS CATALOGUE

ISEKI TX 1300 KE 70
ISEKI TX 1500 KE 75

CATALOGUE CONSTRUCTION

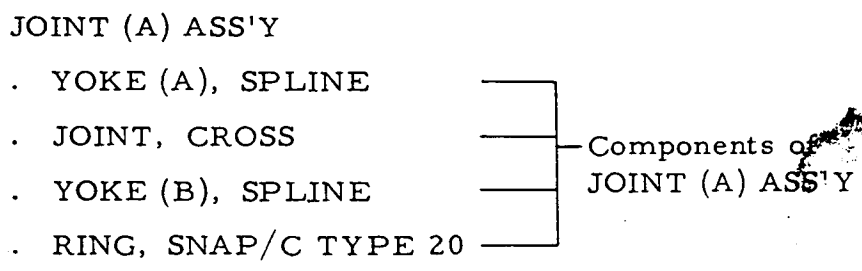
Ref. No. Ref. N°	Parts No. Pieces N°	Description Designation	Q'ty Quant.	Remarks Remarques
A	B	C	D	E

- A. Ref. No : It is a reference number to find parts in the drawings.

- B. Parts No : Every part has its own 12-digit code number with which it is computer-controlled.
Parts which have "V" at their code numbers' head are purchasable in the market.

- C. Description: Names, sizes, functions and other meanings of parts are found in this column.
"LH" and "RH" of parts are given by facing to the tractor-moving-forward direction or looking at them mounted on the tractor.
Components of an assembled part (ASS'Y or SET) are listed set in from ASS'Y or SET name and headed with ". " as in the following example:

(Example)



Abbreviations which are used in this column are explained in Table page 2

- D. Q'ty: This column specifies the quantity of a part required for one tractor. "AR" is the abbreviation of "AS REQUIRED".

E. Remarks: Additional notices are said here if any.

Explanation of symbols:

" ★ " shows parts made to order.

" △ " shows parts not sold as a single part.

REQUESTS ON ORDERING PARTS:

Code No., Part Name, and Quantity should be typed clearly and correctly on your order sheet without fail.

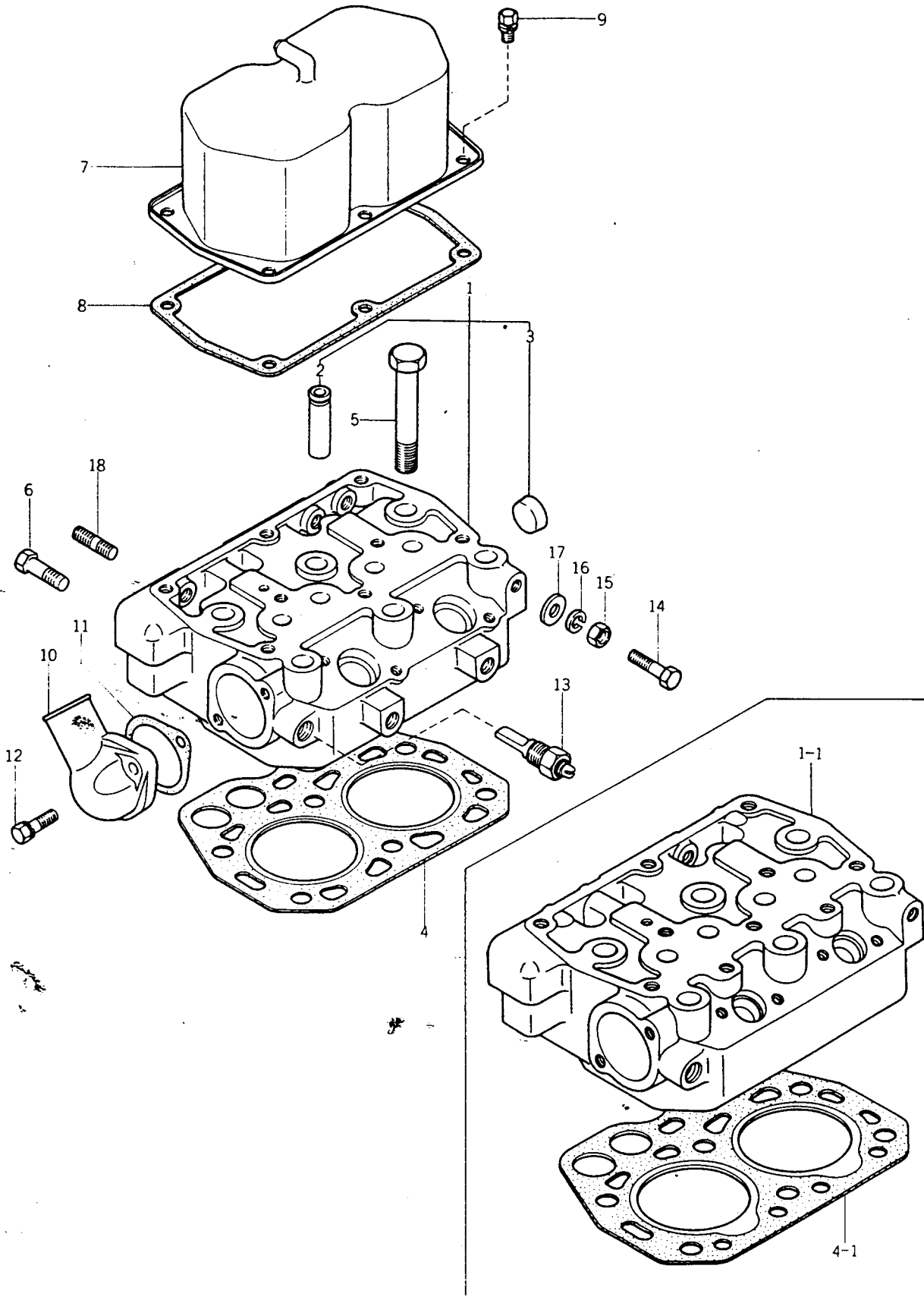
Especially wrong code numbers which are computer-controlled may result in wrong delivery of parts.

ABBREVIATIONS

ABBREVIATIONS	ORIGINAL WORDS	ABBREVIATIONS	ORIGINAL WORDS
ACCEL	ACCELERATOR	NO	NUMBER
ADJ	ADJUST, ADJUSTING	NR	NEEDLE ROLLER
ASSY	ASSEMBLY	OS	OVER SIZE
BKT	BRACKET	P=	PITCH
CONN	CONNECTING	PKG	PACKING
CRANK	CRANKSHAFT	PL	PLAIN
CYL	CYLINDER	PRESS	PRESSURE
DEL	DELIVERY	PTO	POWER TAKE OFF
DIFF	DIFFERENTIAL	R	REAR
EXH	EXHAUST	RB	RADIAL BALL
F	FRONT	RH	RIGHT HAND
HI	HIGH	SP	SPRING
HYD	HYDRAULIC	ST	STRAIGHT
I	INNER	STD	STANDARD
INJ	INJECTION	T	TEETH
LH	LEFT HAND	TB	THRUST BALL
LW	LOWER	US	UNDER SIZE
MANF	MANIFOLD	UP	UPPER
MAX	MAXIMUM	W:	WITH
MECH	MECHANICAL	3P	THREE POINT
MIN	MINIMUM		

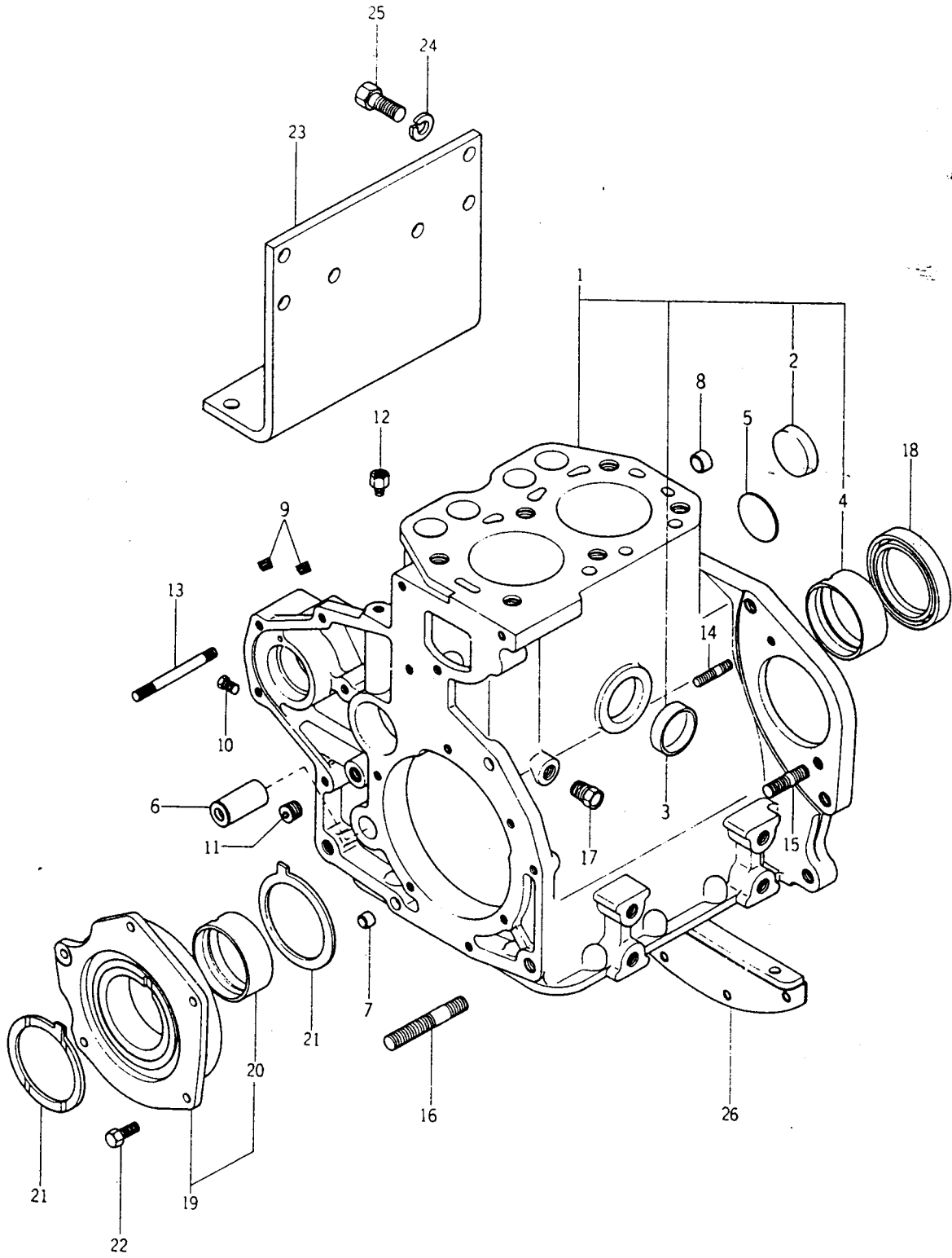
iSEki TX1300 WE70
n TX1300F WE70
n TX1500 WE75
n TX1500F WE75

Fig. 1 CYLINDER HEAD
Culasse



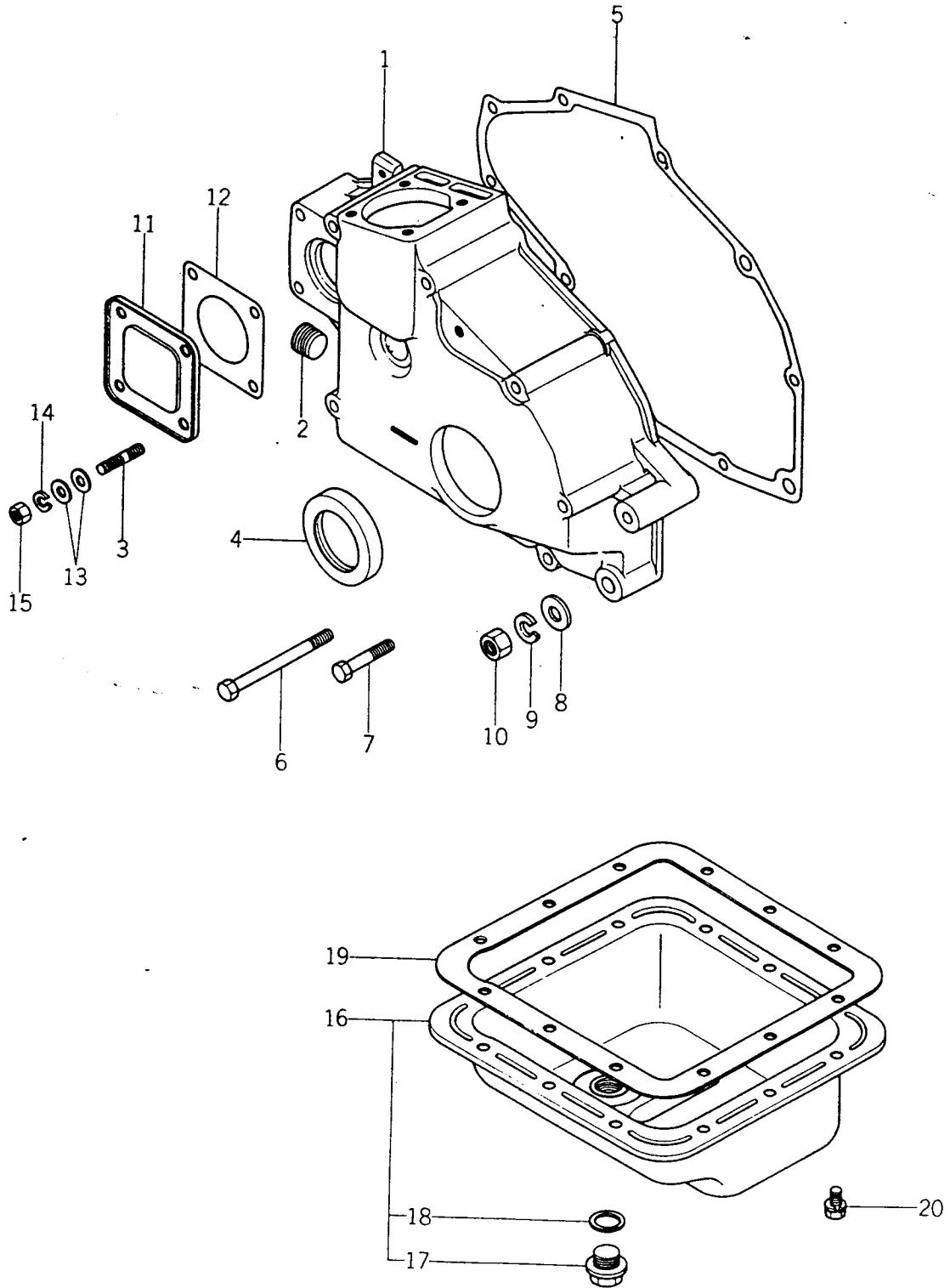
Ref No. Réf N°	Parts No. Pièces N°	Description Désignation	Model & Q'ty Modél & Quant				Remarks Remarques
			KE70	KE70	KE75	KE75	
1- 1	5650-040-0281-0	HEAD, CYL ASSY Culasse	1	1			MM400281 Included 1-3 Compris 1-3
1- 1-1	5650-040-0365-0	HEAD, CYL ASSY Culasse			1	1	MM400365 Included 1-1-3 Compris 1-1-3
1- 2	5650-040-4298-0	GUIDE, VALVE/STD Guide soupape	4	4	4	4	MM404298
1- 3	5660-066-5538-0	CAP, SEALING/25 Pastille	1	1	1	1	MF665538
1- 4	5650-040-0291-0	GASKET, CYL HEAD Joint de culasse	1	1			MM400291
1- 4-1	5650-040-0372-0	GASKET, CYL HEAD Joint de culasse			1	1	MM400372
1- 5	5660-010-1354-0	BOLT/M14 × 90 Vis	6	6	6	6	MF101354
1- 6	5660-010-6089-0	BOLT/M10 × 35 Vis	1	1	1	1	MF106089
1- 7	5650-040-0320-0	COVER, ROCKER Cache culbuteurs	1	1	1	1	MM400320
1- 8	5650-040-0330-0	GASKET, ROCKER COVER Joint	1	1	1	1	MM400330
1- 9	5660-024-0051-0	BOLT/M8 × 16 Vis	6	6	6	6	MF240051
1-10	5663-000-5500-0	FITTING, WATER OUTLET Pipe d'eau	1	1	1	1	MD000550
1-11	5650-040-5450-0	GASKET Joint de pipe	1	1	1	1	MM405450
1-12	5660-024-1257-0	BOLT/M8 × 30 Vis	2	2	2	2	MF241257
1-13	5667-970-4210-0	SWITCH, THERMO Pressostat	1	1	1	1	K7970421
1-14	5650-040-0298-0	BOLT/M10 × 46 Vis	1	1	1	1	MM400298
1-15	5660-043-0006-0	NUT/M10 Ecrou	1	1	1	1	MF430006
1-16	5660-045-0406-0	WASHER, SP/M10 Rondelle frein	1	1	1	1	MF450406
1-17	5660-045-0006-0	WASHER, PL/M10 Rondelle	1	1	1	1	MF450006
1-18	5660-040-2583-0	BOLT, STUD/M10 × 20 Vis goujon	2	2	2	2	MF402583

Fig. 2 CRANK CASE
Carter moteur



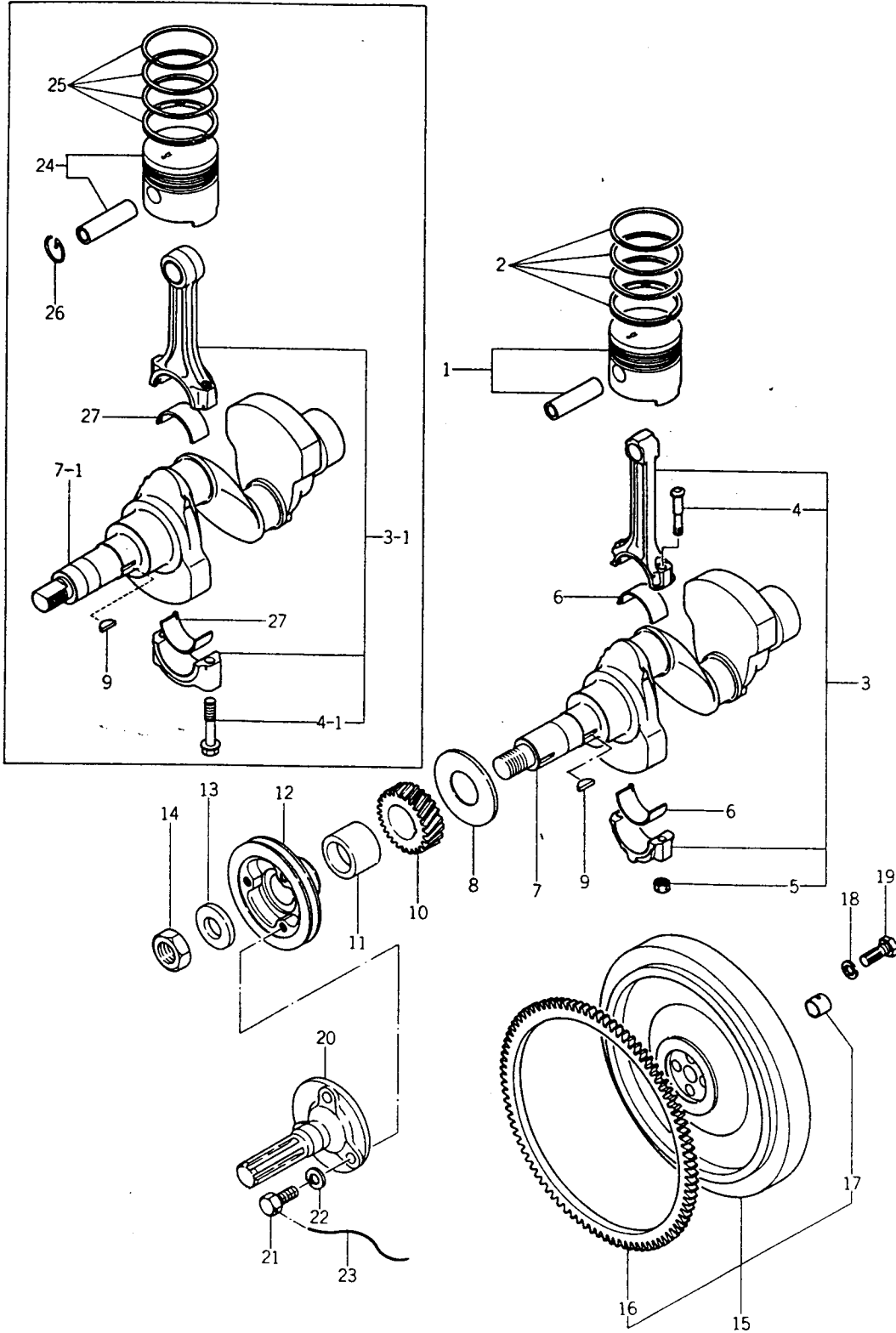
Ref No. Réf N°	Parts No. Pièces N°	Description Désignation	Model & Q'ty Modél & Quant				Remarks Remarques
			KE70	KE70	KE75	KE75	
2- 1	5650-040-0211-0	CASE, CRANK SUB ASSY Carter	1	1			MM400211 Included 1-4-3 Compris 1-4-3
2- 1-1	5650-040-0351-0	CASE, CRANK SUB ASSY Carter			1	1	MM400351 Included 1-1-4-3 Compris 1-1-4-3
2- 2	5663-000-4270-0	CAP, SEALING R/40 Pastille ar	1	1	1	1	MD000427
2- 3	5663-000-4270-0	CAP, SEALING LH/40 Pastille g	1	1	1	1	MD000427
2- 4	5650-040-0240-0	BEARING, CRANK/STD Coussinet standard	1	1	1	1	MM400240
2- 4-1	5650-040-0241-0	BEARING, CRANK/0.25US Coussinet (-0.25)	1	1	1	1	MM400241
2- 4-2	5650-040-0242-0	BEARING, CRANK/0.50US Coussinet (-0.50)	1	1	1	1	MM400242
2- 4-3	5650-040-0243-0	BEARING, CRANK/0.75US Coussinet (-0.75)	1	1	1	1	MM400243
2- 5	5660-066-5511-0	PLUG, EXPANSION/40 Opercule	1	1	1	1	MF665511
2- 6	5650-040-1002-0	SHAFT, GOVERNOR GEAR Axe	1	1	1	1	MM401002
2- 7	5661-047-1104-0	BUSHING, KNOCK/12 x 9 Fourreau	2	2	2	2	MS471104
2- 8	5650-040-1988-0	BUSHING, KNOCK/12 x 11 Fourreau	2	2	2	2	MM401988
2- 9	5661-066-1120-0	PLUG, TAPER/1/8" Boisseau	2	2	2	2	MS661120
2-10	5663-016-2390-0	PLUG, TAPER/1/16" Boisseau	2	2	2	2	MD016239
2-11	5668-311-0610-0	PLUG, TAPER/1/4" Boisseau	1	1	1	1	K8311061
2-12	5668-110-1700-0	CONNECTOR Raccord	1	1	1	1	K8110170
2-13	5651-402-0807-0	BOLT, STUD/M8 x 75 Goujon	2	2	2	2	MK40208075
2-14	5660-040-2566-0	BOLT, STUD/M8 x 25 Goujon	1	1	1	1	MF402566
2-15	5660-040-2585-0	BOLT, STUD/M10 x 25 Goujon	1	1	1	1	MF402585
2-16	5660-040-2621-0	BOLT, STUD/M12 x 65 Goujon	2	2	2	2	MF402621
2-17	5663-000-2690-0	PLUG, WATER DRAIN Purgeur	1	1	1	1	MD000269
2-18	5650-040-0235-0	SEAL, OIL Joint a levres	1	1	1	1	MM400235
2-19	5650-040-0250-0	HOUSING, BEARING ASSY Flasque ensemble	1	1	1	1	MM400250 Included 20 Compris 20
2-20	5650-040-0240-0	• BEARING, CRANK/STD Coussinet standard	1	1	1	1	MM400240
2-20-1	5650-040-0241-0	BEARING, CRANK/0.25US Coussinet (-0.25)	1	1	1	1	MM400241
2-20-2	5650-040-0242-0	BEARING, CRANK/0.50US Coussinet (-0.50)	1	1	1	1	MM400242
2-20-3	5650-040-0243-0	BEARING, CRANK/0.75US Coussinet (-0.75)	1	1	1	1	MM400243
2-21	5650-040-0260-0	BEARING, CRANK THRUST Rondelle d'appui	2	2	2	2	MM400260
2-22	5660-010-1255-0	BOLT/M8 x 20 Vis	5	5	5	5	MF101255
2-23	5650-040-5880-0	BASE, ENGINE Semelle	2	2	2	2	MM405880 Shipping part
2-24	5660-045-0407-0	WASHER, SP/M12 Rondelle frein	4	4	4	4	MF450407
2-25	5660-010-0110-0	BOLT/M12 x 25 Vis	4	4	4	4	MF100110
2-26	5650-040-1896-0	PLATE, R Contre plaque	1	1	1	1	MM401896

Fig. 3 GEAR CASE AND OIL PAN
Couvercle inferieur



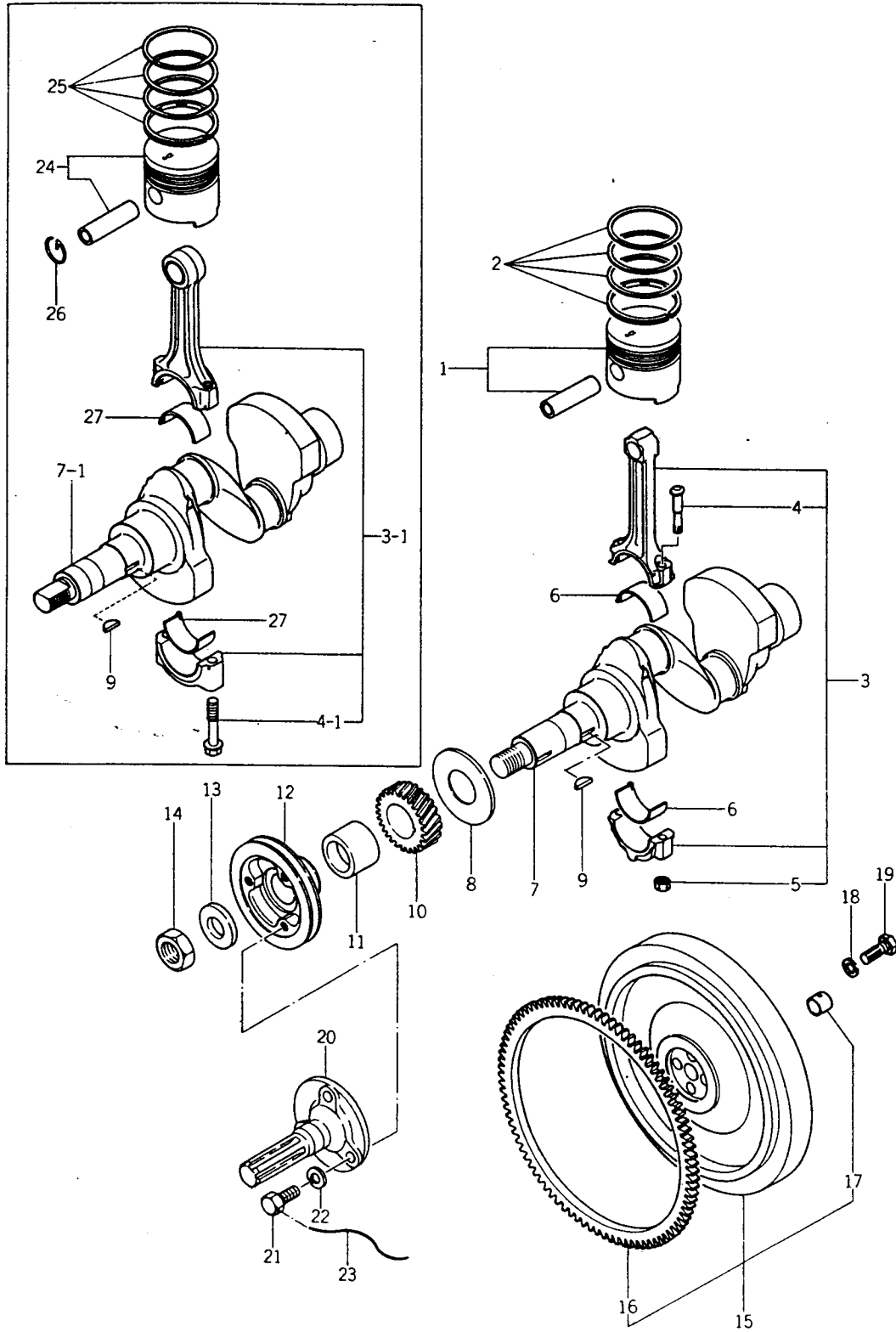
Ref No. Réf N°.	Parts No. Pièces N°.	Description Désignation	Model & Q'ty Modél & Quant				Remarks Remarques
			KE70	KE70	KE75	KE75	
3- 1	5650-040-0410-0	CASE, GEAR Carter de distribution	1	1	1	1	MM400410
3- 2	5661-066-1123-0	PLUG, TAPER/1/2" Boisseau	1	1	1	1	MS661123
3- 3	5660-040-4526-0	BOLT, STUD/M8 × 22 Goujon	2	2	2	2	MF404526
3- 4	5668-313-3900-0	SEAL, OIL Joint a levres	1	1	1	1	K8313390
3- 5	5650-040-0420-0	PACKING/PAPER Joint de carter	1	1	1	1	MM400420
3- 6	5660-010-0074-0	BOLT/M8 × 100 Vis	5	5	5	5	MF100074
3- 7	5660-010-0064-0	BOLT/M8 × 45 Vis	2	2	2	2	MF100064
3- 8	5660-045-0007-0	WASHER, PL/M12 Rondelle	2	2	2	2	MF450007
3- 9	5660-045-0407-0	WASHER, SP/M12 Rondelle frein	2	2	2	2	MF450407
3-10	5660-043-0007-0	NUT/M12 Ecrou	2	2	2	2	MF430007
3-11	5667-910-4510-0	COVER, OIL PUMP SHAFT Couvercle de pompe	1	1	1	1	K7910451
3-12	5667-910-4600-0	PACKING/PAPER Joint	1	1	1	1	K7910460
3-13	5661-045-0035-0	WASHER, PL/M8 Rondelle	8	8	8	8	MS450035
3-14	5661-045-0405-0	WASHER, SP/M8 Rondelle frein	4	4	4	4	MS450405
3-15	5660-043-0005-0	NUT/M8 Ecrou	4	4	4	4	MF430005
3-16	5650-040-0440-0	OIL PAN ASSY Carter dhuile	1	1	1	1	MM400440
3-17	5663-000-3180-0	• PLUG, OIL PAN ASSY Purgeur	1	1	1	1	MD000318
3-18	5663-000-3120-0	• GASKET Joint	1	1	1	1	MD000312
3-19	5650-040-0460-0	PACKING, OIL PAN Joint	1	1	1	1	MM400460
3-20	5660-024-0051-0	BOLT/M8 × 16 Vis	12	12	12	12	MF240051

Fig. 4 PISTON AND CRANKSHAFT
Vilebrequin



Ref No. Réf N°.	Parts No. Pièces N°.	Description Désignation	Model & Q'ty Modél & Quant				Remarks Remarques
			KE70	KE70	KE75	KE75	
X 4- 1	5650-040-6440-0	PISTON W:PIN/STD Piston et axe standard	2	2	YX	300	MM406440
4- 1-1	5650-040-6441-0	PISTON W:PIN/0.25OS Piston et axe (+0.25)	2	2			MM406441
4- 1-2	5650-040-6442-0	PISTON W:PIN/0.50OS Piston et axe (+0.50)	2	2			MM406442
4- 1-3	5650-040-6443-0	PISTON W:PIN/0.75OS Piston et axe (+0.75)	2	2			MM406443
4- 1-4	5650-040-6444-0	PISTON W:PIN/1.00OS Piston et axe (+1mm)	2	2			MM406444
Y 4- 2	5650-040-6600-0	RING, PISTON/STD SET Segmentation standard	2	2	YX	1300	MM406600
4- 2-1	5650-040-6601-0	RING, PISTON/0.25OS SET Segmentation (+0.25)	2	2			MM406601
4- 2-2	5650-040-6602-0	RING, PISTON/0.50OS SET Segmentation (+0.50)	2	2			MM406602
4- 2-3	5650-040-6603-0	RING, PISTON/0.75OS SET Segmentation (+0.75)	2	2			MM406603
4- 2-4	5650-040-6604-0	RING, PISTON/1.00OS SET Segmentation (+1mm)	2	2			MM406604
4- 3	5663-002-7000-0	ROD, CONN ASSY Bielle	2	2			MD002700 Includ 3, 4, 5 Compris 3, 4, 5
4- 3-1	5650-040-0630-0	ROD, CONN ASSY Bielle			2	2	MM400630 Includ 3-1, 4-1 Compris 3-1, 4-1
4- 4	5663-000-7030-0	BOLT, CONN ROD Vis de bielle	4	4			MD000703
4- 4-1	5650-040-4539-0	BOLT, CONN ROD Vis de bielle			4	4	MM404539
4- 5	5663-000-7040-0	NUT Ecrou	4	4			MD000704
4- 6	5650-040-0690-0	BRG, ROD/STD SET Coussinet de bielle standard	2	2			MM400690
4- 6-1	5650-040-0691-0	BRG, ROD/0.25US SET Coussinet de bielle (-0.25)	2	2			MM400691
4- 6-2	5650-040-6920-0	BRG, ROD/0.50US SET Coussinet de bielle (-0.50)	2	2			MM400692
4- 6-3	5650-040-6930-0	BRG, ROD/0.75US SET Coussinet de bielle (-0.75)	2	2			MM400693
4- 7	5650-040-0554-0	CRANKSHAFT Vilebrequin	1	1			MM400554
4- 7-1	5650-040-0557-0	CRANKSHAFT Vilebrequin			1	1	MM400557
4- 8	5650-040-0580-0	PLATE Disque	1	1	1	1	MM400580
4- 9	5660-047-6216-0	KEY, WOODRUFF/5 x 22 Clavette disque	2	2	2	2	MF476216
4-10	5650-040-0560-0	GEAR, CRANK Pignon	1	1	1	1	MM400560
4-11	5650-040-0578-0	PIECE, DISTANCE Entretoise	1	1	1	1	MM400578
4-12	5650-040-0574-0	PULLEY, CRANK Poulie	1	1	1	1	MM400574
4-13	5669-624-1200-0	WASHER, PL Rondelle	1	1	1	1	K9624120
4-14	5660-043-0733-0	NUT/M24 Ecrou	1	1	1	1	MF430733
4-15	5650-040-0590-0	FLYWHEEL ASSY Volant d'inertie ensemble	1	1	1	1	MM400590
4-16	5663-000-6120-0	• GEAR, RING Couronne	1	1	1	1	MD000612
4-17	5650-040-0610-0	• BUSH, CLUTCH SHAFT Coussinet	1	1	1	1	MM400610
4-18	5663-014-2360-0	WASHER, SP/M12 Rondelle frein	4	4	4	4	MD014236
4-19	5663-002-6200-0	BOLT/M12 x 30 Vis	4	4	4	4	MD002620
4-20	1427-102-0010-0	SHAFT, ENGINE PTO Arbre	1	1	1	1	
4-21	1427-102-0020-0	BOLT/M10 x 25 Vis	3	3	3	3	
4-22	V40116-001000	WASHER, SP/M10 Rondelle frein	3	3	3	3	
4-23	V59013-102500	WIRE/1 x 250 Fil	1	1	1	1	
Y 4-24	5650-040-0470-0	PISTON W:PIN/STD Piston et axe standard	YX	1500	2	2	MM400470

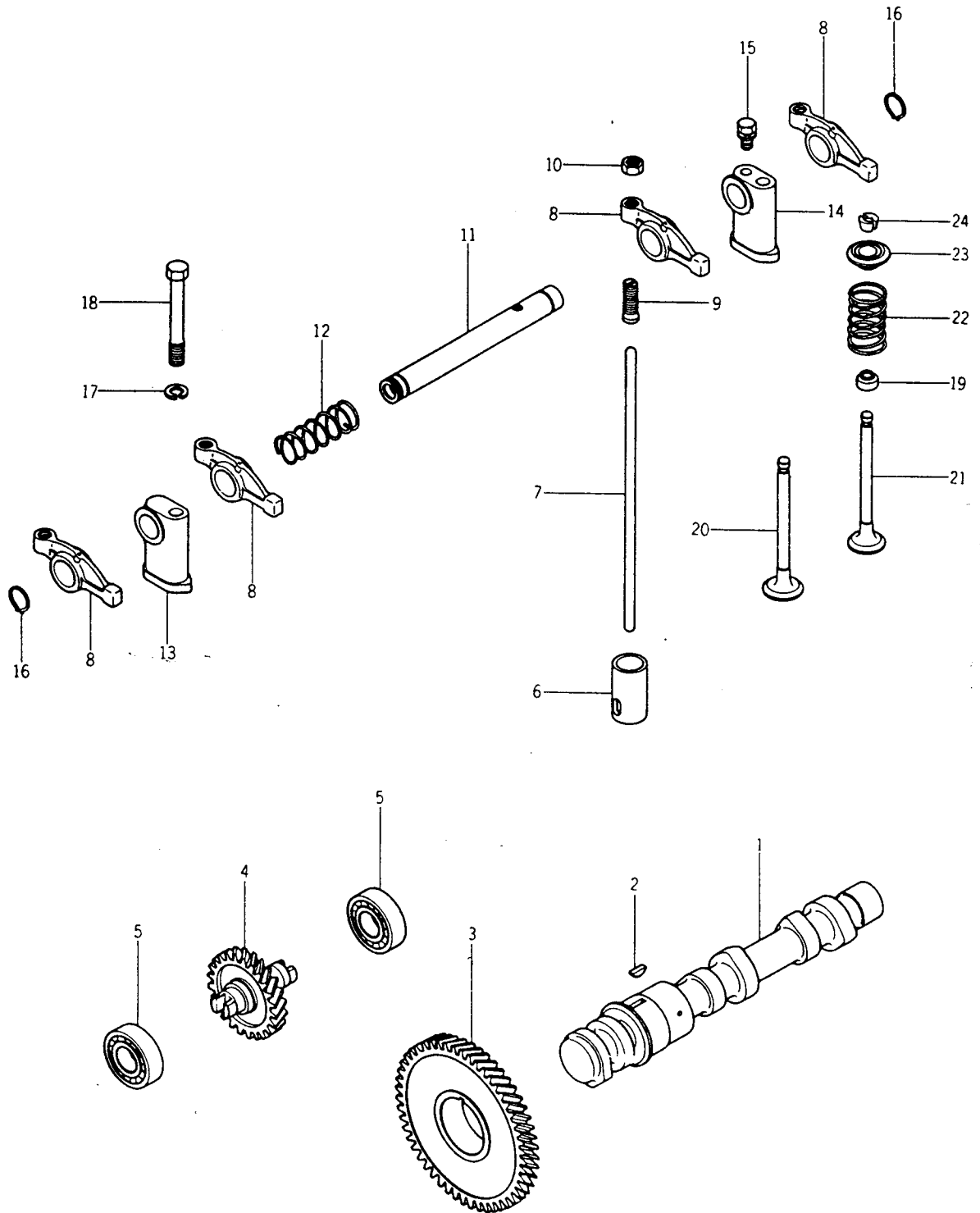
Fig. 4 PISTON AND CRANKSHAFT
Vilebrequin



No. 4

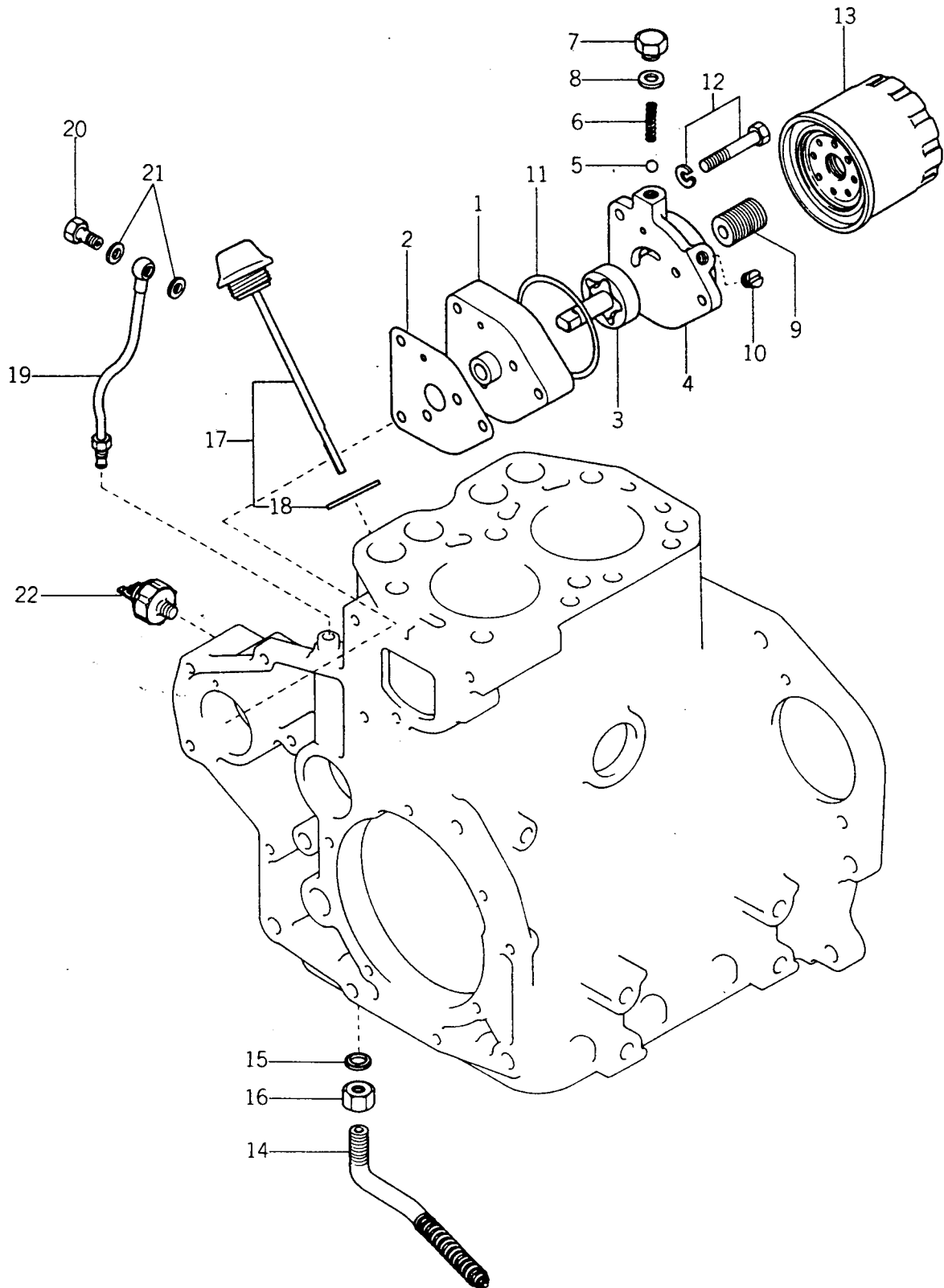
Ref No. Réf N°.	Parts No. Pièces N°.	Description Désignation	Model & Q'ty Modél & Quant				Remarks Remarques
			KE30	KE70	KE75	KE75	
4-24-1	5650-040-0471-0	PISTON W:PIN/0.250S Piston et axe (+0.25)			2	2	MM400471
4-24-2	5650-040-0472-0	PISTON W:PIN/0.500S Piston et axe (+0.50)			2	2	MM400472
4-24-3	5650-040-0473-0	PISTON W:PIN/0.750S Piston et axe (+0.75)			2	2	MM400473
4-24-4	5650-040-0474-0	PISTON W:PIN/1.000S Piston et axe (+1mm)			2	2	MM400474
4-25	5650-040-0805-0	RING, PISTON/STD SET Segmentation standard	VK	1500	2	2	MM400805
4-25-1	5650-040-0806-0	RING, PISTON/0.250S SET Segmentation (+0.25)			2	2	MM400806
4-25-2	5650-040-0807-0	RING, PISTON/0.500S SET Segmentation (+0.50)			2	2	MM400807
4-25-3	5650-040-0808-0	RING, PISTON/0.750S SET Segmentation (+0.75)			2	2	MM400808
4-25-4	5650-040-0809-0	RING, PISTON/1.000S SET Segmentation (+1mm)			2	2	MM400809
4-26	5668-221-2510-0	CLIP, PISTON PIN Collet d'axe			4	4	K8221251
4-27	5650-040-0650-0	BRG, ROD/STD SET Coussinet de bielle standard			2	2	MM400650
4-27-1	5650-040-0651-0	BRG, ROD/0.25US SET Coussinet de bielle (-0.25)			2	2	MM400651
4-27-2	5650-040-0652-0	BRG, ROD/0.50US SET Coussinet de bielle (-0.50)			2	2	MM400652
4-27-3	5650-040-0653-0	BRG, ROD/0.75US SET Coussinet de bielle (-0.75)			2	2	MM400653

Fig. 5 TIMING SYSTEM
Distribution



Ref No. Réf N°.	Parts No. Pièces N°.	Description Désignation	Model & Q'ty Modél & Quant				Remarks Remarques
			KEY	KEY	KEYS	KEYS	
5- 1	5650-040-0713-0	CAMSHAFT Arbre a cames	1	1	1	1	MM400713
5- 2	5660-047-6214-0	KEY, WOODRUFF/5 x 16 Clavette disque	1	1	1	1	MF476214
5- 3	5650-040-0720-0	GEAR, CAMSHAFT Engrenage d'ac	1	1	1	1	MM400720
5- 4	5650-040-1200-0	GEAR, PRESS OIL PUMP Pignon de pompe	1	1	1	1	MM401200
5- 5	5667-831-1600-0	BEARING, RB Roulement	2	2	2	2	K7831160
5- 6	5650-040-4760-0	TAPPET Poussoir	4	4	4	4	MM404760
5- 7	5650-040-0740-0	ROD, PUSH Tige de culbuteur	4	4	4	4	MM400740
5- 8	5669-432-2230-0	ARM, ROCKER W:BUSH Culbuteur	4	4	4	4	K9432223
5- 9	5667-231-2200-0	SCREW, ADJUST Vis de réglage	4	4	4	4	K7231220
5-10	5660-043-0726-0	NUT, JAM/M10 Ecrou	4	4	4	4	MF430726
5-11	5650-040-0775-0	SHAFT, ROCKER ASSY Axe de culbuteurs	1	1	1	1	MM400775
5-12	5663-000-9630-0	SPRING, ROCKER SHAFT Ressort	1	1	1	1	MD000963
5-13	5650-040-0780-0	STAY, ROCKER F Appui av	1	1	1	1	MM400780
5-14	5650-040-0785-0	STAY, ROCKER R Appui ar	1	1	1	1	MM400785
5-15	5660-024-1251-0	BOLT/M8 x 16 Vis	1	1	1	1	MF241251
5-16	5660-052-2010-0	RING, SNAP/19 Collet d'axe	2	2	2	2	MF522010
5-17	5660-045-0406-0	WASHER, SP/M10 Rondelle frein	2	2	2	2	MF450406
5-18	5660-010-1299-0	BOLT/M10 x 80 Vis	2	2	2	2	MF101299
5-19	5669-631-2910-0	SEAL, VALVE STEM Joint de soupape	4	4	4	4	K9631291
5-20	5650-040-0750-0	VALVE, INLET Soupape d'admission	2	2	2	2	MM400750
5-21	5650-040-0755-0	VALVE, EXH Soupape d'echappt	2	2	2	2	MM400755
5-22	5663-000-5000-0	SPRING, VALVE Ressort de soupape	4	4	4	4	MD000500
5-23	5663-005-5050-0	RETAINER, SPRING Cuvette	4	4	4	4	MD005505
5-24	5663-000-5060-0	LOCK, RETAINER Arretoir	8	8	8	8	MD000506

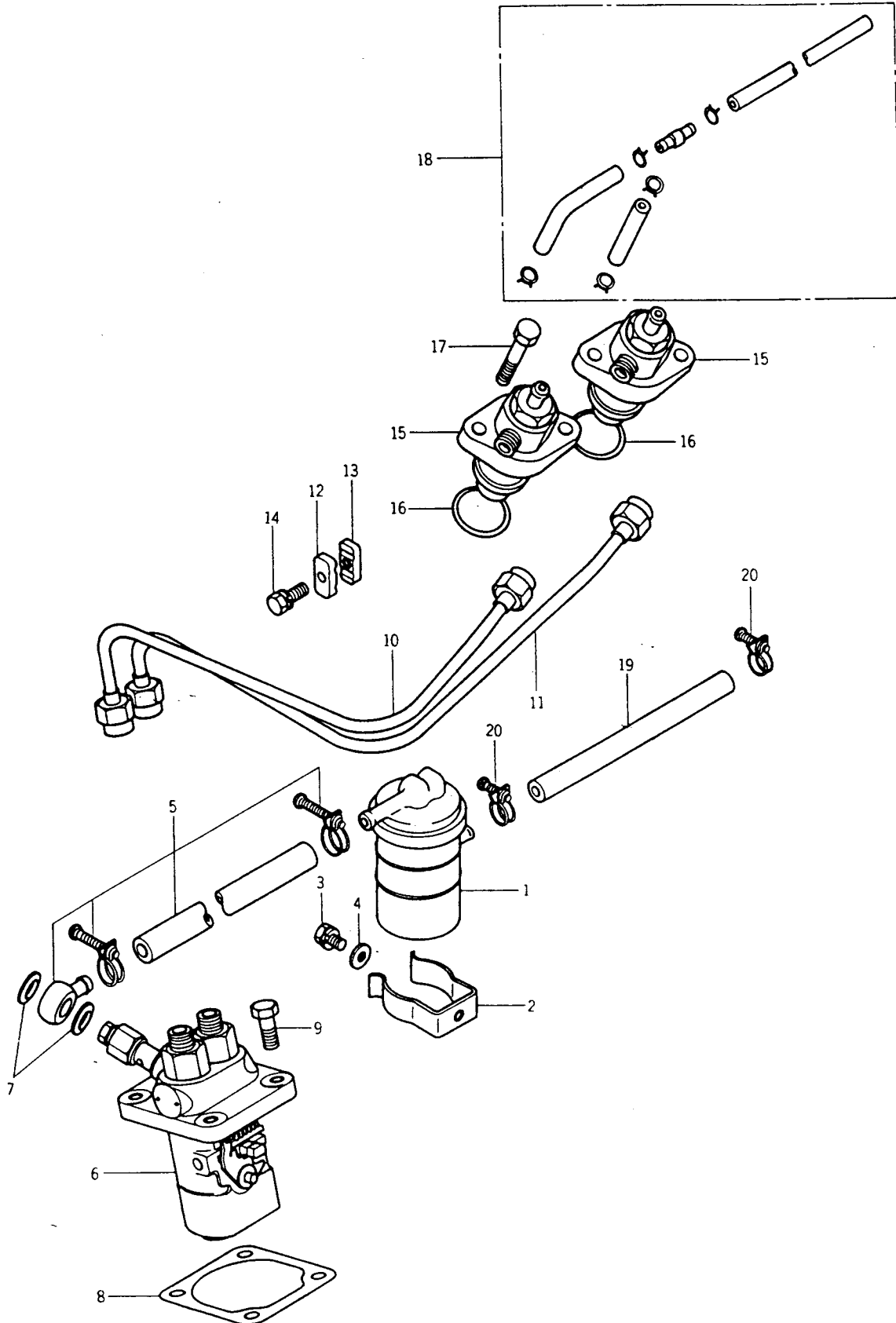
Fig. 6 OIL PUMP AND OIL FILTER
Système de graissage



Ref No. Réf N°.	Parts No. Pièces N°.	Description Désignation	Model & Q'ty Modél & Quant				Remarks Remarques
			KE70	KE 70	KE75	KE75	
6- 1	5650-040-1211-0	BODY, OIL PUMP Corps de pompe	1	1	1	1	MM401211
6- 2	5650-040-1218-0	GASKET, PUMP BODY Joint	1	1	1	1	MM401218
6- 3	5650-040-1220-0	ROTOR ASSY Rotor	1	1	1	1	MM401220
6- 4	5650-040-1251-0	COVER Couvercle	1	1	1	1	MM401251
6- 5	5661-054-0010-0	BALL/5/16" Detendeur	1	1	1	1	MS540010
6- 6	5650-040-1260-0	SPRING, OIL RELIEF Ressort de detendeur	1	1	1	1	MM401260
6- 7	5660-066-5002-0	PLUG Bouchon	1	1	1	1	MF665002
6- 8	5660-066-0033-0	GASKET/10 Joint	1	1	1	1	MF660033
6- 9	5669-461-4010-0	SHAFT, OIL FILTER Vis de filtre	1	1	1	1	K9461401
6-10	5650-900-3010-0	PLUG, TAPER/1/8" Fausset	1	1	1	1	MG103877
6-11	5650-040-1266-0	O-RING Joint torique	1	1	1	1	MM401266
6-12	5660-024-1263-0	BOLT/M8 x 50 Vis	3	3	3	3	MF241263
6-13	5669-665-4000-0	FILTER, OIL ASSY Filtre a huile	1	1	1	1	K9665400
6-14	5650-040-1285-0	SCREW, OIL Crepine	1	1	1	1	MM401285
6-15	5651-661-1200-0	WASHER, SEAL/M12 Rondelle de joint	1	1	1	1	MK66112000
6-16	5660-043-0727-0	NUT/M12 Ecrou	1	1	1	1	MF430727
6-17	5650-040-1271-0	CAP, OIL FILLER ASSY Bouchon jaugeur	1	1	1	1	MM401271
6-18	5667-211-4501-0	GASKET, CAP Joint de jauge	1	1	1	1	K7211451
6-19	5650-040-1290-0	PIPE, OIL ASSY Conduit d'huile	1	1	1	1	MM401290
6-20	5660-065-0101-0	BOLT, EYE/M8 Vis de banjo	1	1	1	1	MF650101
6-21	5660-066-0032-0	GASKET/M8 Joint	2	2	2	2	MF660032
6-22	5663-001-4820-0	SWITCH, OIL PRESS D'huile	1	1	1	1	MD001482

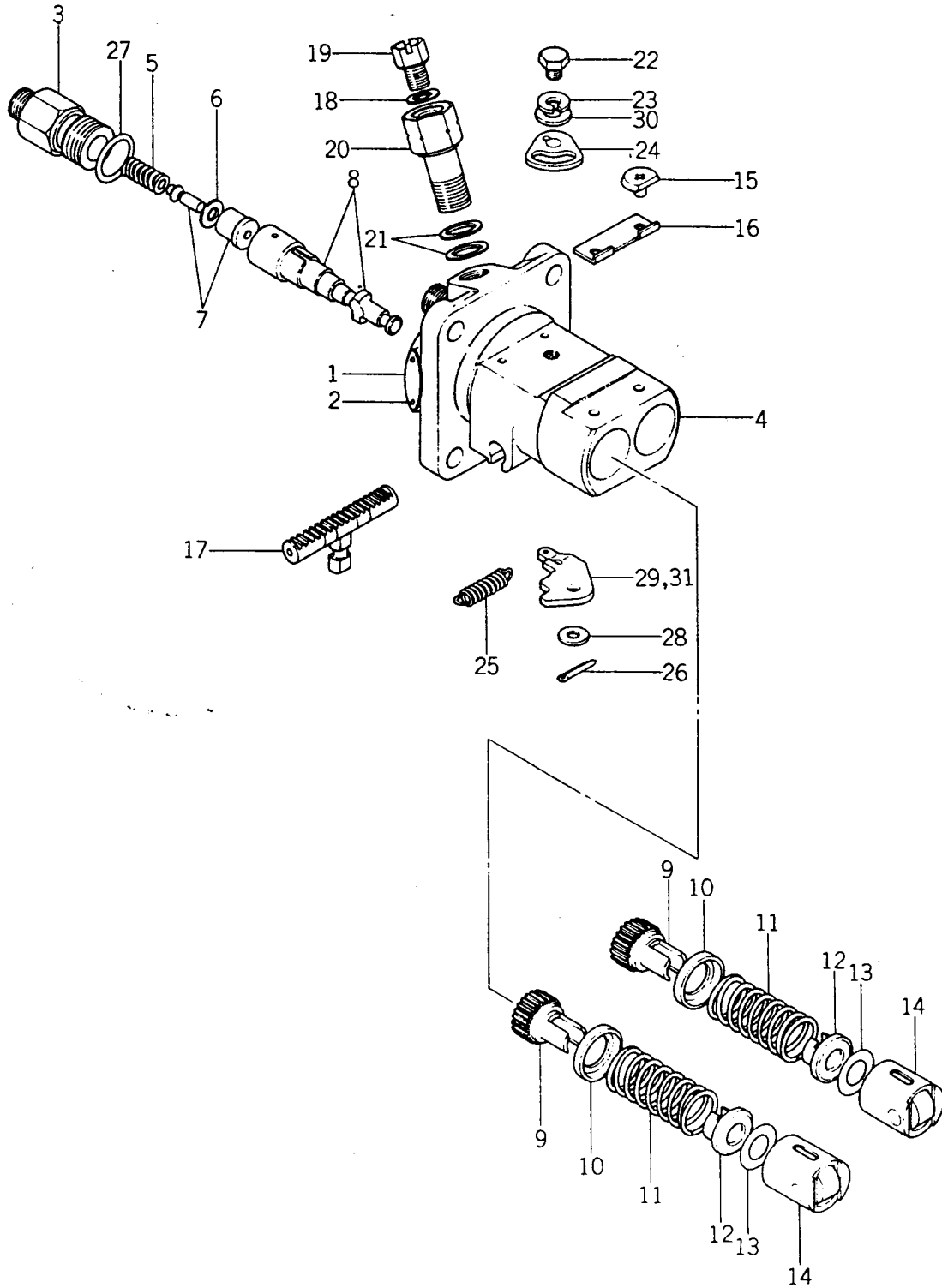
Fig. 7

FUEL SUPPLY SYSTEM
Système d'alimentation



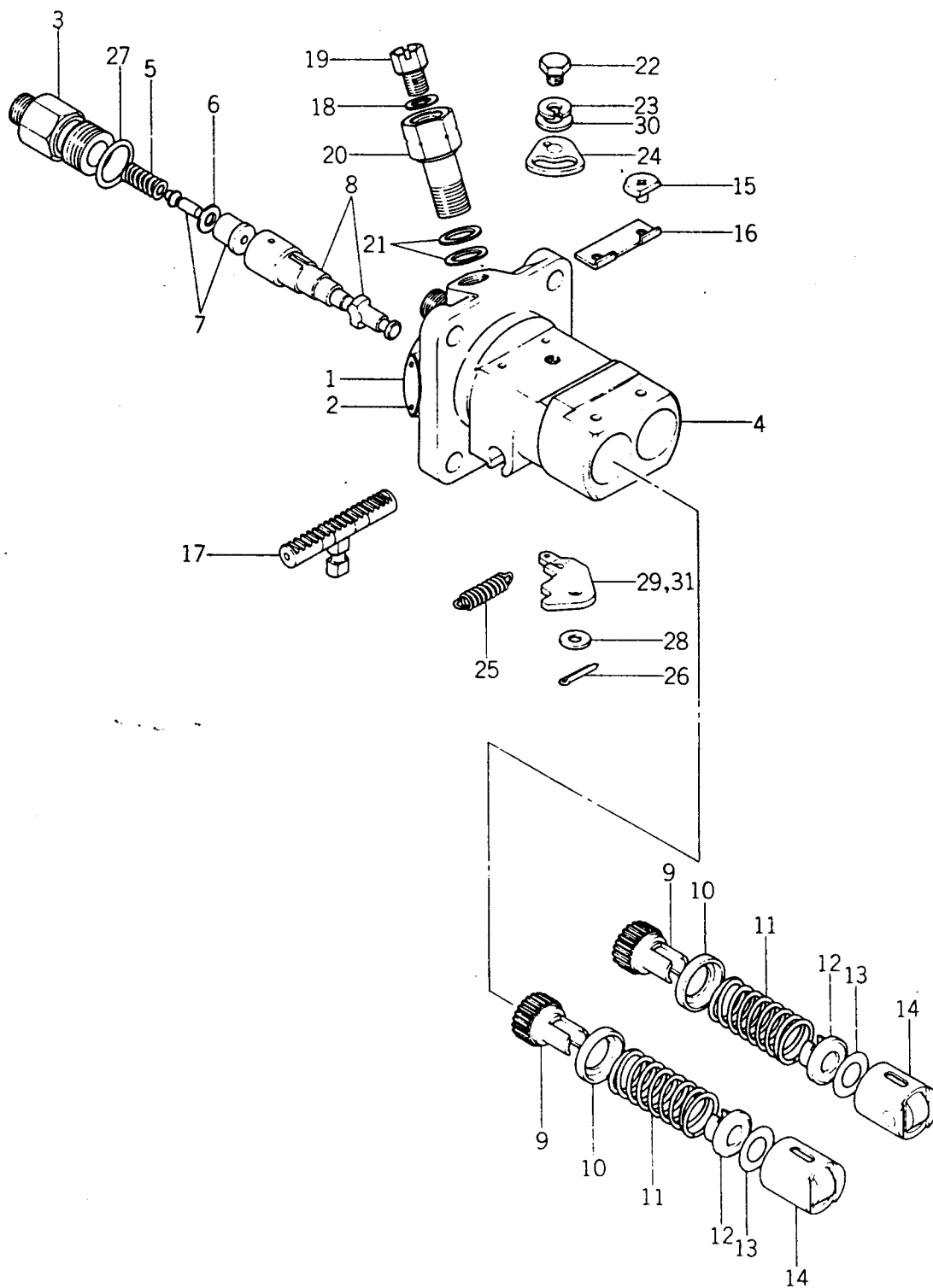
Ref No. Réf N°.	Parts No. Pièces N°.	Description Désignation	Model & Q'ty Modél & Quant				Remarks Remarques
			KE70	KE70	KE75	KE75	
7- 1	5650-040-0861-0	FILTER, FUEL ASSY Filtre g. o.	1	1	1	1	MM400861
7- 2	5650-040-0880-0	CLAMP Bride	1	1	1	1	MM400880
7- 3	5660-024-1223-0	BOLT/M6 x 12 Vis	1	1	1	1	MF241223
7- 4	5660-045-0004-0	WASHER, PL/M6 Rondelle	1	1	1	1	MF450004
7- 5	5650-040-0902-0	PIPE, FUEL ASSY Conduit g. o. de pompe	1	1	1	1	MM400902
7- 6	5650-040-0931-0	PUMP, FUEL INJECTION Pompe d'injection	1	1			MM400931
7- 6-1	5650-040-0922-0	PUMP, FUEL INJECTION Pompe d'injection			1	1	MM400922
7- 7	5651-661-1200-0	WASHER/M12 Rondelle	2	2	2	2	MK66112000
7- 8	5650-040-2940-0	SHIM Cale	AR	AR	AR	AR	MM402940
7- 8-1	5650-040-2941-0	SHIM Cale	AR	AR	AR	AR	MM402941
7- 8-2	5650-040-2942-0	SHIM Cale	AR	AR	AR	AR	MM402942
7- 9	5660-010-0055-0	BOLT/M8 x 20 Vis	4	4	4	4	MF100055
7-10	5650-040-0962-0	PIPE, INJ NO. 1 ASSY Pipe d'injection	1	1	1	1	MM400962
7-11	5650-040-0967-0	PIPE, INJ NO. 2 ASSY Pipe d'injection	1	1	1	1	MM400967
7-12	5664-140-3600-0	CLAMP Serre-pipe	1	1	1	1	K4140360
7-13	5664-140-3700-0	CLAMP Serre-pipe	1	1	1	1	K4140370
7-14	5660-024-1226-0	BOLT/ M6 x 18 Vis	1	1	1	1	MF241226
7-15	5650-040-2971-0	NOZZLE W:HOLDER ASSY Injecteur	2	2	2	2	MM402971
7-16	5666-515-4300-0	GASKET/27 Joint	2	2	2	2	K6515430
7-17	5660-010-1264-0	BOLT/M8 x 45 Vis	4	4			MF101264
7-17-1	5660-010-1266-0	BOLT/M8 x 45 Vis			4	4	MF101266
7-18	5650-040-0988-0	PIPE, RETURN ASSY Conduit de retour	1	1	1	1	MM400988
7-19	5661-060-2045-0	PIPE, FUEL/270 Conduit g. o. de filtre	1	1	1	1	MS602045
7-20	5661-066-0004-0	CLAMP, HOSE/13 Collier	1	1	2	2	MS660004

Fig. 8 FUEL INJECTION PUMP
Pompe d'injection



Ref No. Réf No.	Parts No. Pièces No.	Description Désignation	Model & Q'ty Modél & Quant				Remarks Remarques
			KE70	KE70	KE75	KE75	
8- 0-1	5650-040-0931-0	PUMP, FUEL INJ ASSY Pompe d'injection	1	1			MM400931 Included 1-30 (without 1-1, 21) Compris 1-30 (Sans 1-1, 21)
8- 0-1-1	5650-040-0922-0	PUMP, FUEL INJ ASSY Pompe d'injection			1	1	MM400922 Included 1-1-31-3(Without 29-29-5) Compris 1-1-31-3(Sans 29 29-5)
8- 1	5650-050-1051-0	PLATE, NAME Plaque de marque	1	1			MM501051
8- 1-1	5650-050-1052-0	PLATE, NAME Plaque de marque			1	1	MM501052
8- 2	5650-050-0429-0	RIVET Rivet	2	2	2	2	MM500429
8- 3	5650-050-0224-0	HOLDER, DEL VALVE Raccord d'injection	2	2	2	2	MM500224
8- 4	5650-050-0225-0	HOUSING, SUB ASSY Corps de pompe	1	1	1	1	MM500225
8- 5	5650-050-1047-0	SPRING, DEL VALVE Ressort de clapet	2	2	2	2	MM501047
8- 6	5650-050-0336-0	PACKING Joint	2	2	2	2	MM500336
8- 7	5650-050-1046-0	VALVE, DEL SUB ASSY Clapet de refoulement	2	2	2	2	MM501046
8- 8	5650-050-0228-0	ELEMENT, SUB ASSY Corps de clapet	2	2	2	2	MM500228
8- 9	5650-050-0229-0	SLEEVE, PLUNGER Pignon de debit	2	2	2	2	MM500229
8-10	5650-050-0357-0	SEAT, SPRING UP Coupelle superieure	2	2	2	2	MM500357
8-11	5650-050-0360-0	SPRING, PUMP PLUNGER Ressort	2	2	2	2	MM500360
8-12	5650-050-0316-0	SEAT, SPRING LW Coupelle inferieure	2	2	2	2	MM500316
8-13	5650-050-0299-0	PLATE, SHIM Rondelle d'epaisseur	AR	AR	AR	AR	MM500299
8-13-1	5650-050-0309-0	PLATE, SHIM Rondelle d'epaisseur	AR	AR	AR	AR	MM500309
8-13-2	5650-050-0310-0	PLATE, SHIM Rondelle d'epaisseur	AR	AR	AR	AR	MM500310
8-13-3	5650-050-0315-0	PLATE, SHIM Rondelle d'epaisseur	AR	AR	AR	AR	MM500315
8-14	5650-050-0230-0	TAPPET, SUB ASSY Poussoir	2	2	2	2	MM500230
8-15	5650-050-0231-0	PIN, TAPPET GUIDE Doigt de poussoir	2	2	2	2	MM500231
8-16	5650-050-0232-0	PLATE Plaquette	1	1	1	1	MM500232
8-17	5650-050-0277-0	RACK, CONTROL Cremailere	1	1	1	1	MM500277
8-18	5650-050-0441-0	WASHER Rondelle	1	1	1	1	MM500441
8-19	5650-050-0402-0	SCREW, AIR BLEEDER Vis de desaeration	1	1	1	1	MM500402
8-20	5650-050-0403-0	SCREW, FOLLOW Vis d'alimentation	1	1	1	1	MM500403
8-21	5651-661-1200-0	WASHER Rondelle	2	2	2	2	MK66112000
8-22	5650-050-0234-0	BOLT Vis	1	1	1	1	MM500234
8-23	5650-050-1078-0	WASHER, SP Rondelle frein	1	1	1	1	MM501078
8-24	5650-050-1077-0	PLATE ASSY Guide	1	1	1	1	MM501077
8-25	5650-050-1050-0	SPRING, RETURN Ressort de rappel	1	1	1	1	MM501050
8-26	5650-050-0431-0	PIN, SPLIT Goupille fendue	1	1	1	1	MM500431
8-27	5650-050-0438-0	O-RING Joint torique	2	2	2	2	MM500438
8-28	5650-900-5010-0	WASHER, PLATE Rondelle	AR	AR	AR	AR	JP9114520
8-28-1	5650-900-5020-0	WASHER, PLATE Rondelle	AR	AR	AR	AR	JP9114530
8-28-2	5650-900-5030-0	WASHER, PLATE Rondelle	AR	AR	AR	AR	JP9114540
8-28-3	5650-900-5040-0	WASHER, PLATE Rondelle	AR	AR	AR	AR	JP9114550
8-29	5650-050-0237-0	STOPPER Butee	AR	AR			MM500237

Fig. 8 FUEL INJECTION PUMP
Pompe d'injection

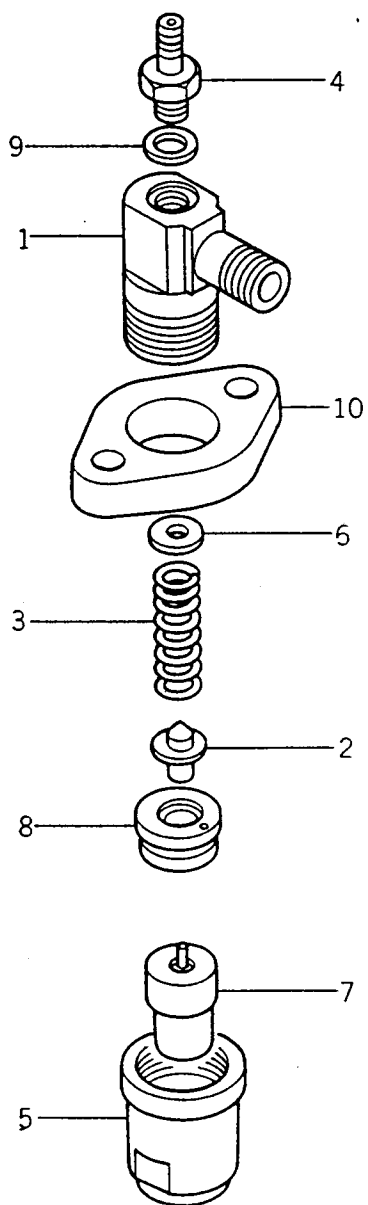


No. 8

Ref No. Réf N°.	Parts No. Pièces N°.	Description Désignation	Model & Q'ty Modél & Quant				Remarks Remarques
			KE70	KE10	KE75	KE75	
8-29-1	5650-050-0243-0	STOPPER Butee	AR	AR			MM500243
8-29-2	5650-050-0247-0	STOPPER Butee	AR	AR			MM500247
8-29-3	5650-050-0249-0	STOPPER Butee	AR	AR			MM500249
8-29-4	5650-050-0244-0	STOPPER Butee	AR	AR			MM500244
8-29-5	5650-050-0246-0	STOPPER Butee	AR	AR			MM500246
8-30	5650-050-0250-0	WASHER, PLATE Rondelle	1	1	1	1	MM500250
8-31	5650-050-0244-0	STOPPER Butee			AR	AR	MM500244
8-31-1	5650-050-0246-0	STOPPER Butee			AR	AR	MM500246
8-31-2	5650-050-0288-0	STOPPER Butee			AR	AR	MM500288
8-31-3	5650-050-0293-0	STOPPER Butee			AR	AR	MM500293

Fig. 9

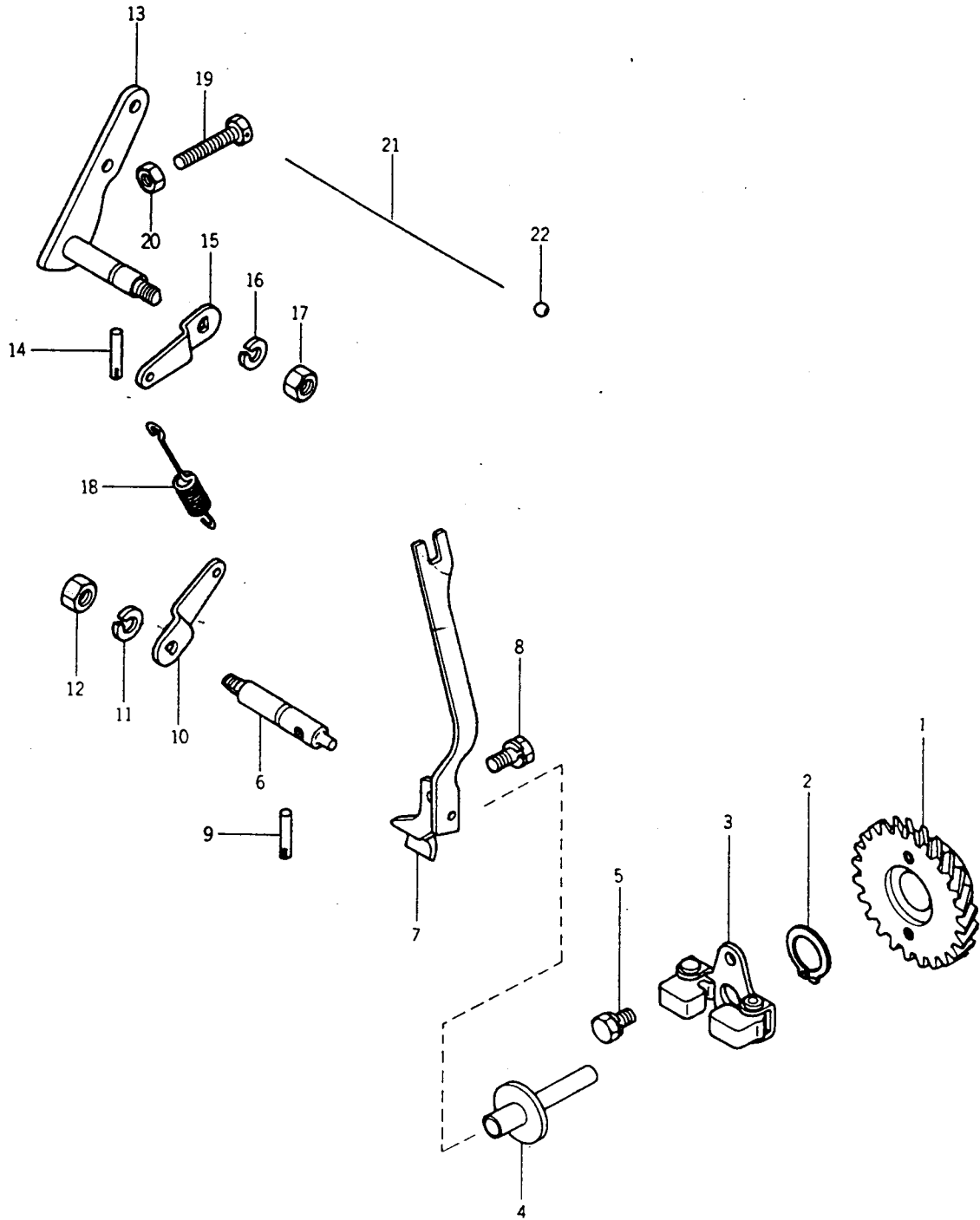
NOZZLE AND NOZZLE HOLDER
Injecteur et corps



Ref No. Réf N°.	Parts No. Pièces N°.	Description Désignation	Model & Q'ty Modél & Quant				Remarks Remarques
			KE70	KE70	KE75	KE75	
9- 0-1	5650-040-2971-0	NOZZLE W:HOLDER ASSY Injecteur complet	2	2	2	2	MM402971 Included 1-9
9- 1	5650-050-0910-0	BODY, NOZZLE HOLDER Porte injecteur	2	2	2	2	MM500910
9- 2	5650-050-0135-0	PIN, PRESS Pointeau	2	2	2	2	MM500135
9- 3	5650-050-0136-0	SPRING, PRESS Ressort	2	2	2	2	MM500136
9- 4	5650-050-0909-0	NIPPLE, SUB ASSY Ajustage	2	2	2	2	MM500909
9- 5	5650-050-0908-0	NUT, NOZZLE RETAIN Ecrou	2	2	2	2	MM500908
9- 6	5650-050-0785-0	WASHER/0.1 Rondelle	AR	AR	AR	AR	MM500785
9- 6-1	5650-050-0786-0	WASHER/0.1 Rondelle	AR	AR	AR	AR	MM500786
9- 6-2	5650-050-0787-0	WASHER/0.1 Rondelle	AR	AR	AR	AR	MM500787
9- 6-3	5650-050-0795-0	WASHER/0.1 Rondelle	AR	AR	AR	AR	MM500795
9- 6-4	5650-050-0796-0	WASHER/0.1 Rondelle	AR	AR	AR	AR	MM500796
9- 6-5	5650-050-0797-0	WASHER/0.1 Rondelle	AR	AR	AR	AR	MM500797
9- 6-6	5650-050-0798-0	WASHER/0.1 Rondelle	AR	AR	AR	AR	MM500798
9- 6-7	5650-050-0799-0	WASHER/0.1 Rondelle	AR	AR	AR	AR	MM500799
9- 7	5650-030-0152-0	NOZZLE ASSY Siege	2	2	2	2	MM300152
9- 8	5650-050-0137-0	PIECE, DISTANCE Entretoise	1	1	2	2	MM500137
9- 9	5650-050-0441-0	WASHER Rondelle	1	1	4	4	MM500441
9-10	5650-050-0907-0	FLANGE Frangé	2	2	2	2	MM500907

Fig. 10

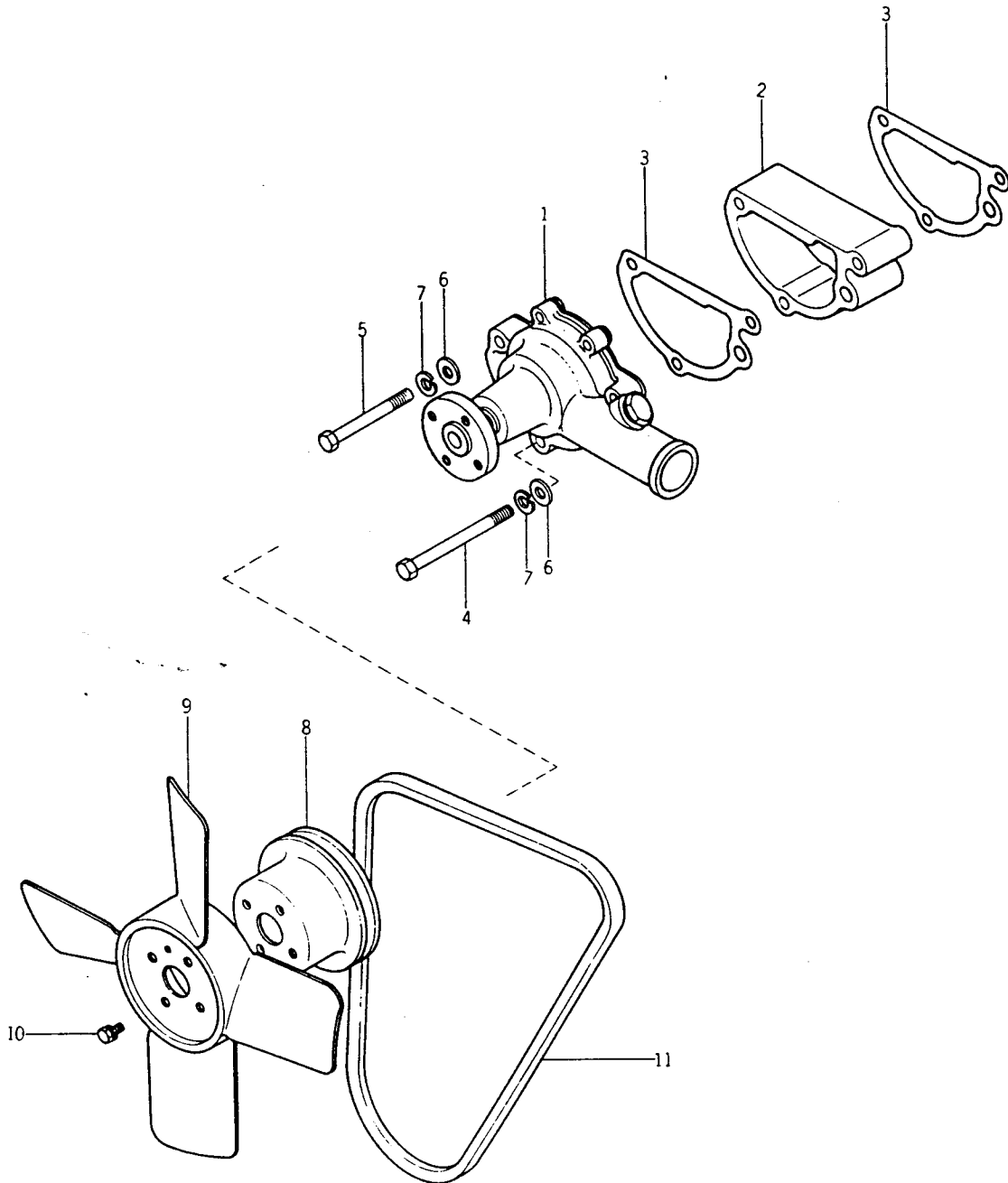
GOVERNOR
Regulateur



Ref No. Réf N°.	Parts No. Pièces N°.	Description Désignation	Model & Q'ty Modél & Quant				Remarks Remarques
			KEYO	KE90	KEYS	KEYS	
10- 1	5650-040-1006-0	GEAR, GOVERNOR Pignon	1	1	1	1	MM401006
10- 2	5660-052-2011-0	RING, SNAP/2 Collet d'axe	1	1	1	1	MF522011
10- 3	5650-040-0995-0	WEIGHT, GOVERNOR ASSY Masselotte	1	1	1	1	MM400995
10- 4	5650-040-1072-0	SHAFT, SLIDING ASSY Coulisseau	1	1			MM401072
10- 4-1	5650-040-1071-0	SHAFT, SLIDING ASSY Coulisseau			1	1	MM401071
10- 5	5660-024-1223-0	BOLT/M6 x 12 Vis	2	2	2	2	MF241223
10- 6	5650-040-1010-0	SHAFT, GOVERNOR Axe de regulation	1	1	1	1	MM401010
10- 7	5650-040-1020-0	LEVER, FORK Levier intermediaire	1	1	1	1	MM401020
10- 8	5660-024-1224-0	BOLT/M6 x 14 Vis	1	1	1	1	MF241224
10- 9	5668-712-6300-0	PIN, GROOVED Doigt	1	1	1	1	K8712630
10-10	5650-040-1027-0	LEVER, SPRING Attache de ressort	1	1	1	1	MM401027
10-11	5660-045-0405-0	WASHER, SP/M8 Rondelle frein	1	1	1	1	MF450405
10-12	5660-043-0725-0	NUT, JAM/M8 Ecrou	1	1	1	1	MF430725
10-13	5650-040-1032-0	LEVER, SPEED CONTROL Levier de regulation	1	1	1	1	MM401032
10-14	5668-712-6300-0	PIN, GROOVED Doigt	1	1	1	1	K8712630
10-15	5650-040-1028-0	LEVER, SPRING Attache	1	1	1	1	MM401028
10-16	5660-045-0405-0	WASHER, SP/M8 Rondelle frein	1	1	1	1	MF450405
10-17	5660-043-0725-0	NUT, JAM/M8 Ecrou	1	1	1	1	MF430725
10-18	5650-040-1063-0	SPRING, GOVERNOR Ressort	1	1	1	1	MM401063
10-19	5650-040-1080-0	BOLT Vis	1	1			MM401080
10-19-1	5668-353-2200-0	BOLT Vis			1	1	K8353220
10-20	5660-043-0724-0	NUT, JAM/M6 Ecrou	1	1	1	1	MF430724
10-21	5651-993-0014-0	WIRE, LOCK Fil d'arrzt	1	1	1	1	MK99300140
10-22	5651-992-0000-1	METAL, SEALING Plombage	1	1	1	1	MK99200001

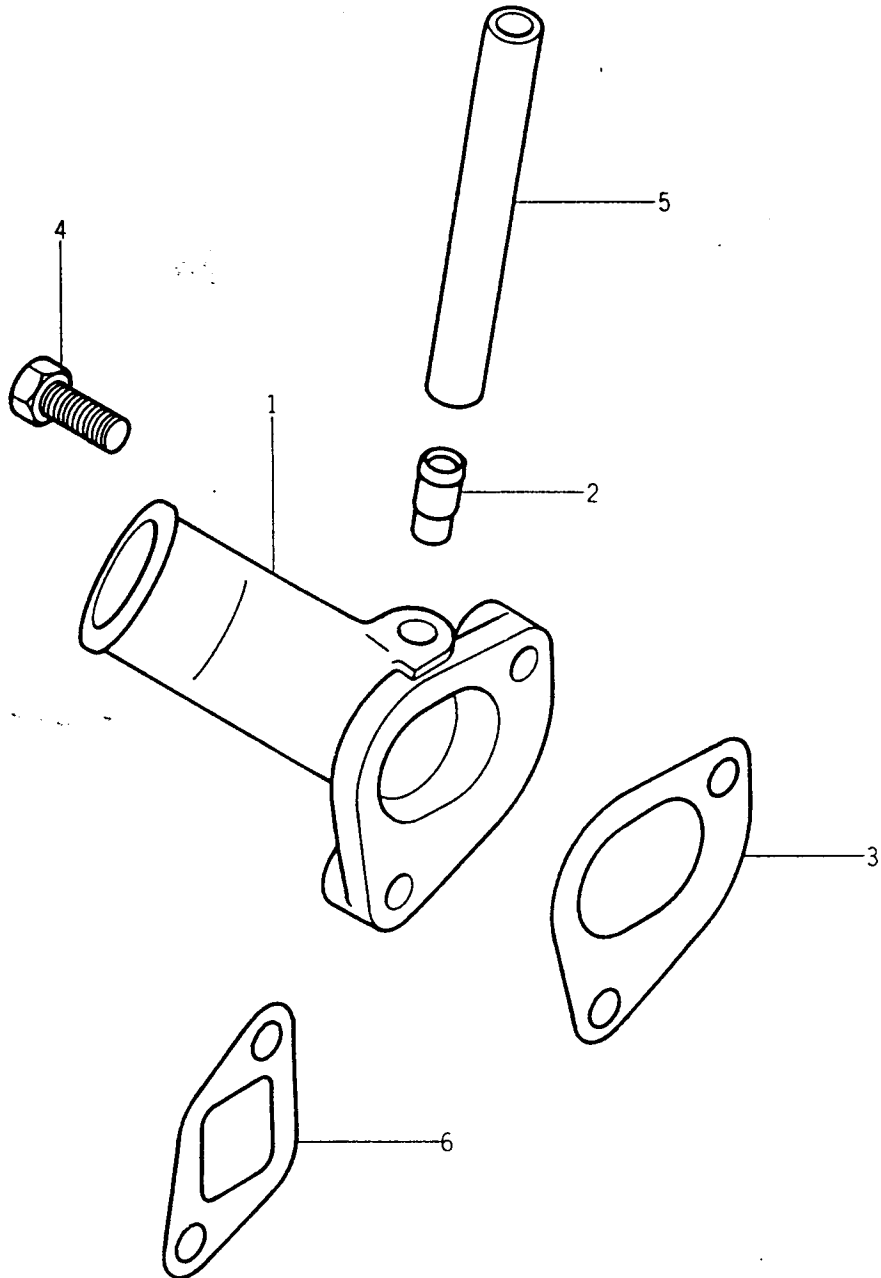
Fig. 11

WATER PUMP
Pompe a eau



Ref No. Réf N°.	Parts No. Pièces N°.	Description Désignation	Model & Q'ty Modél & Quant				Remarks Remarques
			KE70	KE70	KE75	KE75	
11- 1	5650-040-1400-0	PUMP, WATER ASSY Pompe a eau	1	1	1	1	MM401400
11- 2	5669-671-1620-0	FITTING, WATER PUMP Raccord	1	1	1	1	K9671162
11- 3	5669-671-1420-0	GASKET, WATER PUMP Joint	2	2	2	2	K9671142
11- 4	5668-313-4200-0	BOLT/M8 × 95 Vis	1	1	1	1	K8313420
11- 5	5660-010-0070-0	BOLT/M8 × 75 Vis	2	2	2	2	MF100070
11- 6	5660-045-0005-0	WASHER, PL/M8 Rondelle	3	3	3	3	MF450005
11- 7	5660-045-0405-0	WASHER, SP/M8 Rondelle frein	3	3	3	3	MF450405
11- 8	5669-674-0510-0	PULLEY, WATER PUMP Poulie	1	1	1	1	K9674051
11- 9	5669-674-4000-0	FAN, COOLING/290-4N.S Ventilateur (ø290-4 pales)	1	1	1	1	K9674400
11-10	5660-024-1223-0	BOLT/M6 × 12 Vis	4	4	4	4	MF241223
11-11	5663-011-3510-0	BELT, FAN/870 HM Courroie	1	1	1	1	MD011351

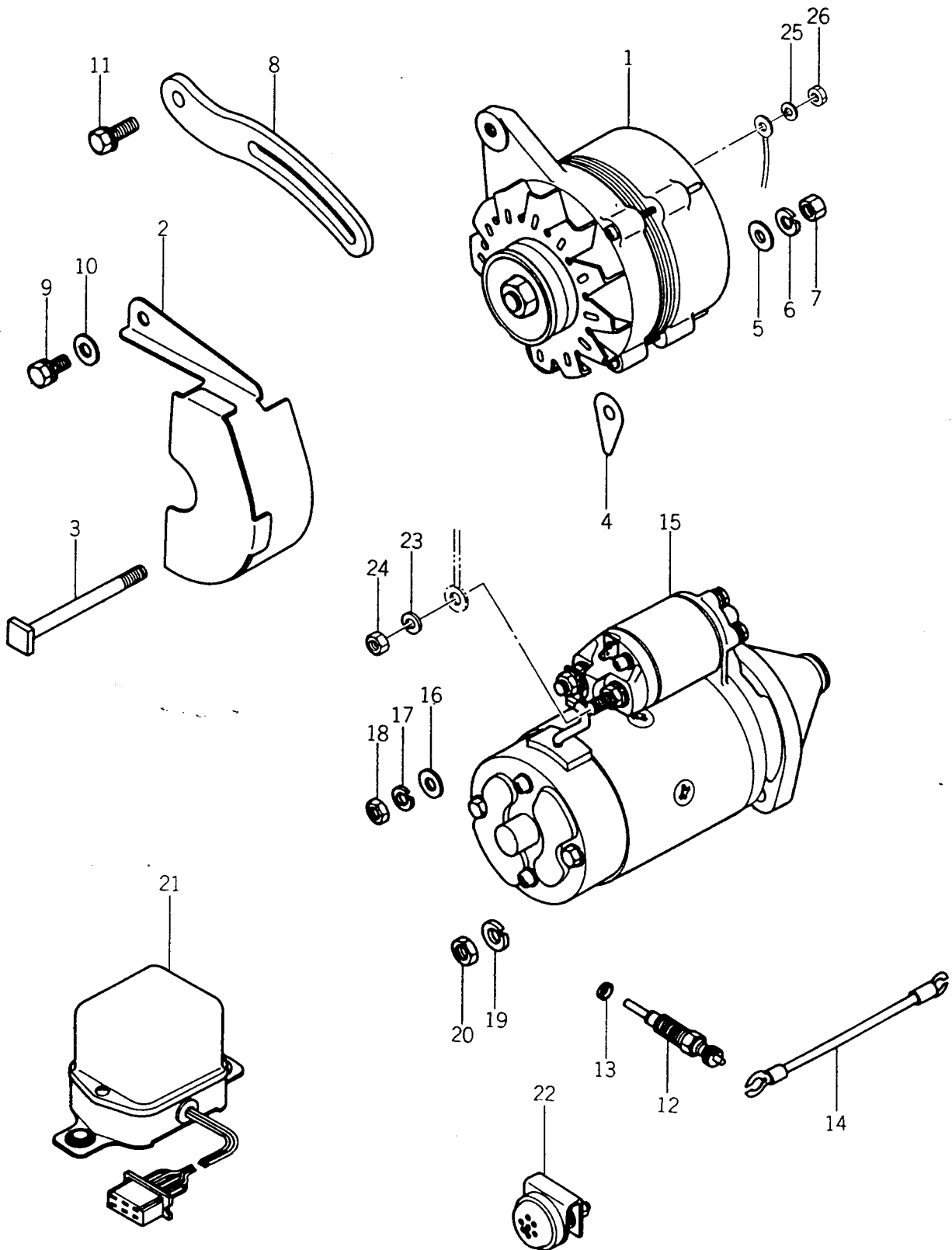
Fig. 12 INLET PIPE AND GASKET
Tuyau d'aspiration



Ref No. Réf N°.	Parts No. Pièces N°.	Description Désignation	Model & Q'ty Modél & Quant				Remarks Remarques
			KE70	KE70	KE75	KE75	
12- 1	5650-040-1310-0	PIPE, INLET Pipe d'admission	1	1	1	1	MM401310
12- 2	5669-644-1710-0	PIPE Boisseau	1	1	1	1	K9644171
12- 3	5668-344-2210-0	GASKET Joint	1	1	1	1	K8344221
12- 4	5660-010-0085-0	BOLT/M10×25 Vis	2	2	2	2	MF100085
12- 5	5650-040-0380-0	PIPE, AIR BREATHER Reniflard	1	1	1	1	MM400380
12- 6	5650-040-0481-0	GASKET, EXH PIPE Joint	2	2	2	2	MM400481

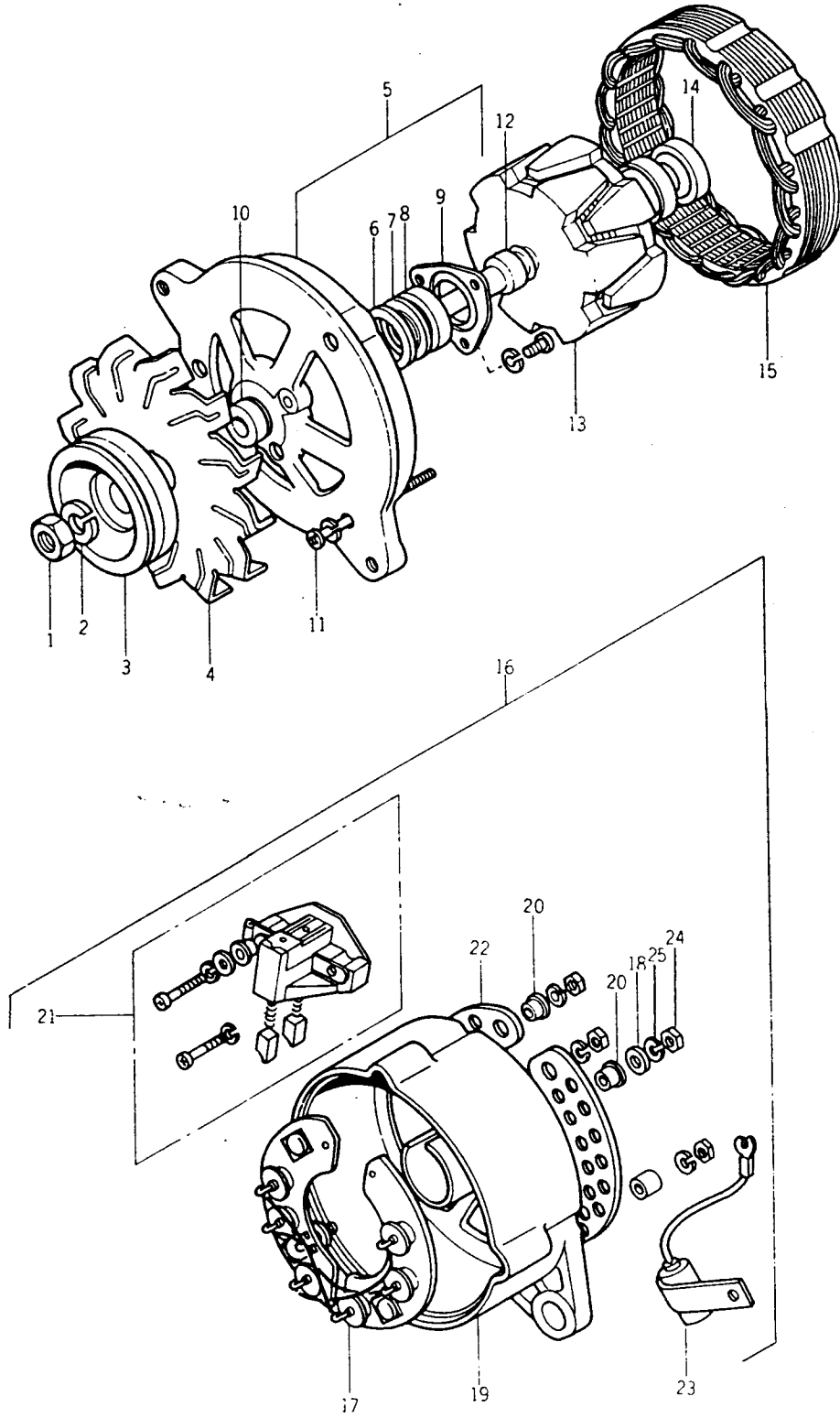
Fig. 13

ELECTRIC EQUIPMENT
Equipment électrique



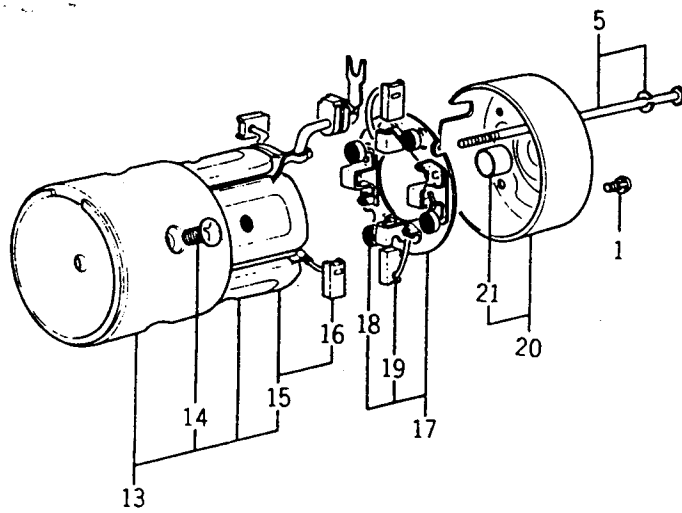
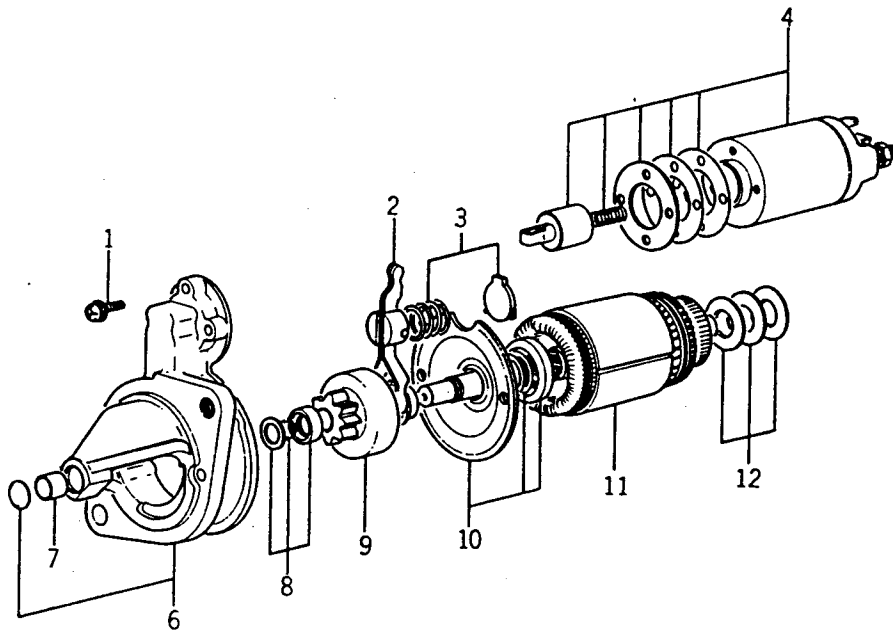
Ref No. Ref N°.	Parts No. Pièces N°.	Description Désignation	Model & Q'ty Modél & Quant				Remarks Remarques
			KE70	KE70	KE75	KE75	
13- 1	5663-011-5000-0	ALTERNATOR ASSY Alternateur assemble	1	1	1	1	MD011500
13- 2	5650-040-1662-0	COVER, ALTERNATOR Protecteur	1	1	1	1	MM401662
13- 3	5663-011-5110-0	BOLT Vis	1	1	1	1	MD011511
13- 4	5663-001-5170-0	SHIM Cale	AR	AR	AR	AR	MD001517
13- 5	5660-045-0005-0	WASHER, PL/M8 Rondelle	1	1	1	1	MF450005
13- 6	5660-045-0405-0	WASHER, SP/M8 Rondelle frein	1	1	1	1	MF450405
13- 7	5660-043-0005-0	NUT/M8 Ecrou	1	1	1	1	MF430005
13- 8	5650-040-1670-0	BRACE, ALTERNATOR Etrier	1	1	1	1	MM401670
13- 8-1	5663-001-5200-0	BRACE, ALTERNATOR Etrier	1	1			MD001520
13- 9	5660-024-1253-0	BOLT/M8 x 20 Vis	1	1	1	1	MF241253
13-10	5663-000-4250-0	WASHER, PL/M8 Rondelle	1	1	1	1	MD000425
13-11	5660-024-1255-0	BOLT/M8 x 25 Vis	1	1	1	1	MF241255
13-12	5650-040-1621-0	PLUG, GLOW Bougie a incandescence	2	2	2	2	MM401621
13-13	5653-130-1132-0	GASKET, GLOW PLUG Joint de bougie	2	2			3130113200
13-14	5669-670-2600-0	WIRE, GLOW PLUG Fil de bougie	1	1	1	1	K9670260
13-15	5650-040-1600-0	STARTER ASSY Demarreur	1	1	1	1	MM401600
13-16	5660-045-0005-0	WASHER, PL/M8 Rondelle	1	1	1	1	MF450005
13-17	5660-045-0405-0	WASHER, SP/M8 Rondelle frein	1	1	1	1	MF450405
13-18	5660-043-0841-0	NUT/M8 Ecrou	1	1	1	1	MF430841
13-19	5660-045-0406-0	WASHER, SP/M10 Rondelle frein	1	1	1	1	MF450406
13-20	5660-043-0842-0	NUT/M10 Ecrou	1	1	1	1	MF430842
13-21	5669-480-9100-0	REGULATOR, VOLTAGE Regulateur de tension	1	1	1	1	K9480910
13-22	5668-370-3500-0	LAMP, GLOW Temoin de bougies	1	1	1	1	K8370350
13-23	V40116-000800	WASHER, SP/M8 Rondelle frein			1	1	
13-24	V30226-000800	NUT/M8 Ecrou			1	1	
13-25	V40116-000500	WASHER, SP/M5 Rondelle frein			1	1	
13-26	V30026-000500	NUT/M5 Ecrou			1	1	

Fig. 14 ALTERNATOR
Alternateur



Ref No. Réf N°.	Parts No. Pièces No.	Description Désignation	Model & Q'ty Modél & Quant				Remarks Remarques
			KE70	KE70	KE75	KE75	
14- 0-1	5663-011-5000-0	ALTERNATOR ASSY Alternateur (eclate)	1	1	1	1	MD011500 Included 1-23 Compris 1-23
14- 1	5663-604-0320-0	NUT Ecrou	1	1	1	1	MD604032
14- 2	5663-604-0230-0	WASHER, SP Rondelle frein	1	1	1	1	MD604023
14- 3	5663-604-2800-0	PULLEY Poulie	1	1	1	1	MD604280
14- 4	5663-604-2290-0	FAN Ventilateur	1	1	1	1	MD604229
14- 5	5663-604-0850-0	FRAME, DRIVE END ASSY Flasque	1	1	1	1	MD604085
14- 6	5663-604-0310-0	FELT, OIL Presse-étoupe	1	1	1	1	MD604031
14- 7	5663-604-0070-0	COVER, FELT Rondelle joint	1	1	1	1	MD604007
14- 8	5663-604-0340-0	BEARING, RB Roulement	1	1	1	1	MD604034
14- 9	5663-604-0080-0	PLATE, RETAINER Contre-plaque	1	1	1	1	MD604008
14-10	5663-604-8450-0	COLLAR, STEEL Bague	1	1	1	1	MD604845
14-11	5663-604-0280-0	BOLT, THROUGH Vis	3	3	3	3	MD604028
14-12	5663-604-0370-0	COLLAR, STEEL Entretoise	1	1	1	1	MD604037
14-13	5663-604-0830-0	ROTOR ASSY Rotor	1	1	1	1	MD604083
14-14	5663-604-0330-0	BEARING, RB Roulement	1	1	1	1	MD604033
14-15	5663-604-1980-0	STARTER ASSY Stator	1	1	1	1	MD604198
14-16	5663-604-1940-0	FRAME, R END ASSY Flaque ar	1	1	1	1	MD604194
14-17	5663-604-1890-0	FIN, RECTIFIER HOLDER Plaque a diodes	1	1	1	1	MD604189
14-18	5663-604-1150-0	WASHER, INSULATOR Rondelle isolante	1	1	1	1	MD604115
14-19	5663-604-1170-0	FRAME, R END Flasque posterieur	1	1	1	1	MD604117
14-20	5663-604-2260-0	BUSH, INSULATOR Douille isolante	2	2	2	2	MD604226
14-21	5663-604-1920-0	HOLDER, BRUSH ASSY Porte balais	1	1	1	1	MD604192
14-22	5663-604-1930-0	COVER, R END Grille	1	1	1	1	MD604193
14-23	5663-604-0800-0	CONDENSER Condensateur	1	1	1	1	MD604080
14-24	V30026-000500	NUT/M5 Ecrou	1	1	1	1	
14-25	V40116-000500	WASHER, SP/M5 Rondelle frein	1	1	1	1	

Fig. 15 STARTER
Demarreur



Ref No. Réf N°.	Parts No. Pièces N°.	Description Désignation	Model & Q'ty Modél & Quant				Remarks Remarques
			KE70	KE70	KE75	KE75	
15- 0-1	5650-040-1600-0	STARTER ASSY Demarreur (eclate)	1	1	1	1	MM401600 Included 1-21 Compris 1-21
15- 1	5663-602-9620-0	SCREW SET Vis	1	1	1	1	MD602962
15- 2	5663-602-4780-0	LEVER ASSY Lever de commande	1	1	1	1	MD602478
15- 3	5663-602-9630-0	SPRING SET Ressort	1	1	1	1	MD602963
15- 4	5663-602-0740-0	SWITCH ASSY Solenoiide	1	1	1	1	MD602074
15- 5	5663-602-7380-0	BOLT/M6 × 165 SET Vis	1	1	1	1	MD602738
15- 6	5663-602-3040-0	BKT, F ASSY Cage du bendix	1	1	1	1	MD602304
15- 7	5663-602-6860-0	BEARING Roulement	1	1	1	1	MD602686
15- 8	5663-602-7200-0	STOPPER SET Butee	1	1	1	1	MD602720
15- 9	5663-602-6790-0	CLUTCH, OVER RUNNING Bendix	1	1	1	1	MD602679
15-10	5663-602-4830-0	BKT, CENTER ASSY Flasque	1	1	1	1	MD602483
15-11	5663-602-7550-0	ARMATURE Induit	1	1	1	1	MD602755
15-12	5663-602-7350-0	WASHER SET Jeux de rondelles	1	1	1	1	MD602735
15-13	5663-607-1670-0	YOKE ASSY Inducteur protege	1	1	1	1	MD607167
15-14	5663-602-3810-0	• SCREW/M10 × 15 Vis	4	4	4	4	MD602381
15-15	5663-607-0790-0	• COIL, FIELD Inducteur	1	1	1	1	MD607079
15-16	5663-602-4680-0	• BRUSH Balai	2	2	2	2	MD602468
15-17	5663-602-4690-0	HOLDER, BRUSH ASSY Collecteur	1	1	1	1	MD602469
15-18	5663-602-2100-0	• SPRING, BRUSH Ressort	4	4	4	4	MD602210
15-19	5663-602-4700-0	• BRUSH Balai	2	2	2	2	MD602470
15-20	5663-602-2120-0	BKT, R ASSY Cage du collecteur	1	1	1	1	MD602212
15-21	5663-602-2130-0	• BEARING Roulement	1	1	1	1	MD602213

Fig. 16 AIR CLENER AND RADIATOR SYSTEM
 Filtre a air et radiateur

